

VENTILÁTORY COMBIFAB



POPIS

Ventilátory sú poháňané priamo ako aj cez hnací remeň. Výstupy ventilátorov sú umiestnené rôzne. Ventilátory sa skladajú z pevného krytu, vstupného kužeľovitého otvoru, obežného kola a motora.

Ventilátory s priamym pohonom sú vyrábané s motorom umiestneným na prírube s upevnením priamo na kryte (D1) alebo u väčších typov s umiestnením na stojane (D2). Ventilátory s pohonom cez hnací remeň sú vyrábané s oporným stojanom a menšie typy s motorom umiestneným nad oporným stojanom (G5 a G5A). Veľké ventilátory s hnacím remeňom majú motor štandardne umiestnený na spoločnom ráme pre ventilátor a motor (G3).

TECHNICKÉ ÚDAJE

- Tri typy obežných kolies
 - typ R pre čistý vzduch. Max. množstvo materiálu $5g/m^3$ a max. veľkosť zrna $2x2x2mm$. Vysoká účinnosť až do 85%. Množstvo vzduchu $0,2-25m^3/s$ a celkový tlak do 7000 Pa
 - typ S-pre znečistenie prachom a malými pevnými časticami. Max. množstvo materiálu $0,1kg/m^3$ a max. veľkosť zrn $20x20x40mm$. Vysoká účinnosť až do 80%. Množstvo vzduchu $0,2-25m^3/s$ a celkový tlak do 10 000 Pa
 - typ T. Max. množstvo materiálu $0,5g/m^3$ a max. veľkosť zrna $20x40x90mm$. Ventilátor má účinnosť do 60%. Množstvo vzduchu $0,2-25m^3/s$ a celkový tlak do 10 000 Pa
 - Niekoľko polôh výstupov
 - Varianty priamy pohon alebo pohon cez hnací remeň
 - Teplota vzduchu pri vstupe (max 70C)
 - Teplota prostredia (max 50C)

VÝHODY

- Vysoká účinnosť až do 87%
 - Nízka spotreba energie
 - Vysoká spoľahlivosť a nízke náklady na údržbu
 - Široký sortiment ventilátorov temer pre všetky aplikácie
 - Efektívne zníženie hlučnosti vďaka protihlukovým skrinkám
- Vyrábajú sa aj vo verzii ATEX do výbušného prostredia

PRÍSLUŠENSTVO

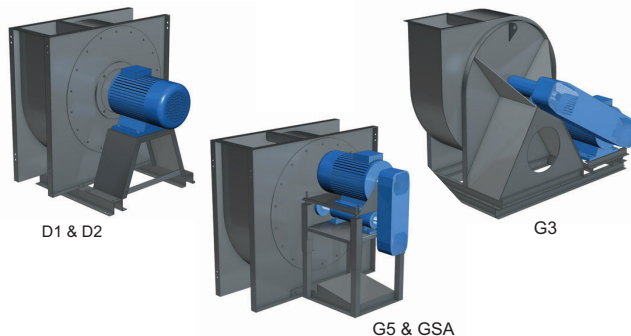
- Protihluková skriňa
- Výpust
- Senzor rýchlosti
- Diferenciál. tlakový spínač
- Absorbéry vibrácií
- Flexi koncovky
- Kontrolné dvierka

VARIANTY

Verzia ATEX pre výbušný plyn a prach.

FARBA

Sivá RAL 7000



Lopatkové obežné koleso – typ R

Je uzavreté koleso s dozadu ohnutými lopatkami, ktoré sa používa na prenos čistého vzduchu a vzduchu obsahujúceho malé množstvo jemného prachu, ako napr. dym vznikajúci pri zvarovaní, olejová hmla a výfukové plyny.

Účinnosť zariadenia dosahuje až 87%.

Lopatkové obežné koleso – typ S

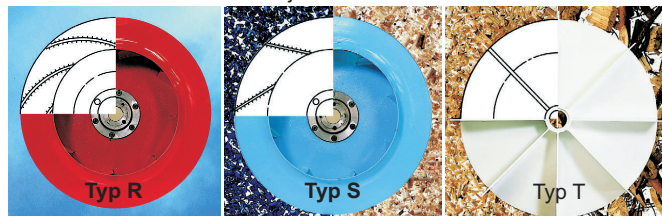
Tento typ predstavuje uzavreté, čiastočne samočistiace koleso s rovnými, dozadu otočenými lopatkami, ktoré sa používa na prenos prachu, vznikajúceho pri brúsení, pílení, hobľovaní a pod.

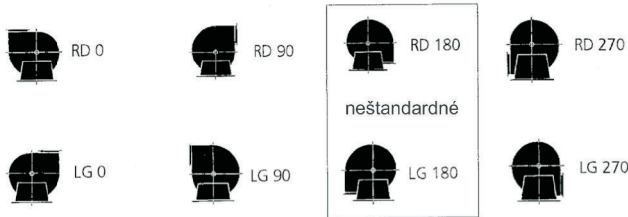
Účinnosť zariadenia dosahuje až 81%.

Lopatkové obežné koleso – typ T

Otvorené samočistiace obežné teleso typ T má rovné radiálne lopatky. Používa sa na prenos častíc vznikajúcich pri strihaní a hobľovaní.

Účinnosť zariadenia dosahuje až 61%.



POLOHA VENTILÁTORA PODĽA EUROVENT

COMBIFAB Z (v zhode s ATEX)

Ventilátor COMBIFAB sa vyrába aj vo verzii ATEX pre prach a plyny. Pre prach je k dispozícii pre zóny 21 alebo 22 interne, pre plyny sú to zóny 1 alebo 2

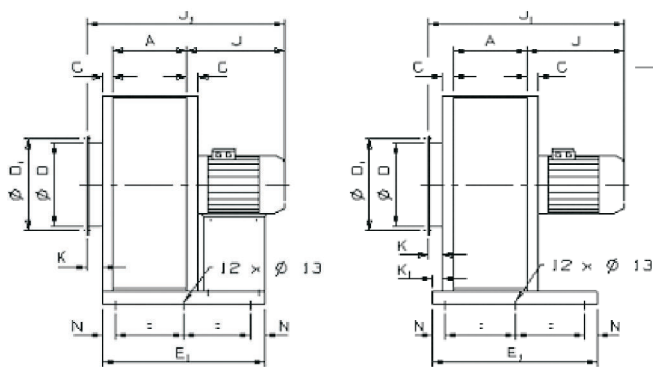
Typ	Priemer vstupu (mm)						
	160	180	200	224	250	280	315
0.40	D1	D1	D1	D1	D2/G5	G5	G5
0.56			D1	D1	D1	D2	D2

Typ	Priemer vstupu (mm)					
	355	400	450	500	560	630
0.40	D2	D2/G5	D2/G5	G5A	G5A	G5A
0.56	D2			D2/G5	G5A	G5A

D1/D2: Priamy pohon G5: Typ s hnacím remeňom G5 G5A: Typ s hnacím remeňom G5A G5: len RD0 alebo LG0

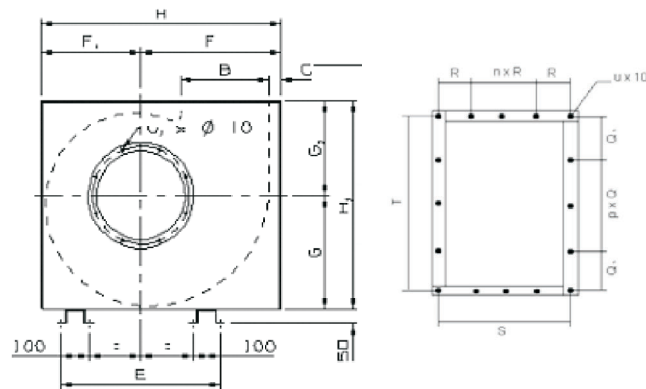
Špeciálne povinné črty a značenie	Interná zóna		
	Non zóna	Zóna 22 (2)	Zóna 21 (1)
Non zóna	Štandard. ventilát. Štandard. motor Bez značenia	COMBIFAB Z Kontrol. dvierka Značenie: EX II DGT4 Interior Zone 22/2	COMBIFAB Z Vstup - Cu Kontrol. dvierka D1/D2: tepel. senzor na držadle Značenie: EX II 3DGT4 Interior 21/1
	Zona22	Motor Ex II3DT4 alebo Motor Ex II3GT4 Značenie: EX II 3DGT4	COMBIFAB Z Kontrol. dvierka Motor Ex II3DT4 alebo Motor Ex II3GT4 Značenie: EX II 3DGT4 Interior Zone 22/2
Zona21		Motor Ex II2DT4 alebo Motor Ex II2GT4 Značenie: EX II 2DGT4	COMBIFAB Z Kontrol. dvierka Motor Ex II2DT4 alebo Motor Ex II2GT4 Značenie: EX II 2DGT4 Interior Zone 22/2

OBS: V protihluk. skríni: Vonkajšia zóna je max. 1 krok od vnútornej zóny. Motor musí byť vybavený termistorom na ochranu pred preťažením
*Typ závisí od motora. VEM, MEZ: typ Pt100

COMBIFAB 040 - ROZMERY


Typ D2

Typ D1

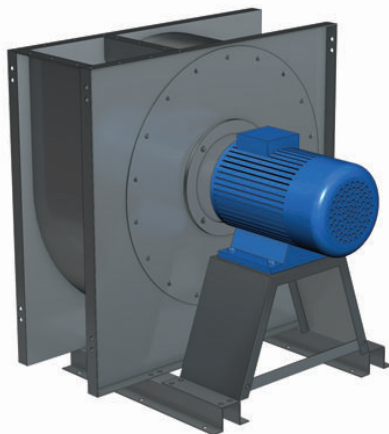

TECHNICKÉ ÚDAJE

Typ	Ø Bež. koleša	A	B	C	Ø D	D1	E	E1	F	F1	G	G1	H	H1	J	J1
0.40-160	355	112	200	30	160	192	417	312	238	265	245	550	510			
0.40-180	398	125	224	30	180	212	463	346	264	300	275	610	575			
0.40-200	447	140	250	30	200	232	523	384	296	330	305	680	635			
0.40-224	501	160	280	30	224	261	583	428	332	370	340	760	710			
0.40-250	562	180	315	30	250	289	663	476	374	410	385	850	795			
0.40-280	631	200	355	40	280	318	743	540	420	460	430	960	890			
0.40-315	708	224	400	40	315	349	839	601	469	520	480	1070	1000			
0.40-355	794	250	450	40	355	394	939	670	530	580	530	1200	1110			
0.40-400	891	280	500	40	400	438	1039	746	594	650	590	1340	1240			
0.40-450	1000	315	560	40	450	488	1179	832	658	730	660	1490	1390			

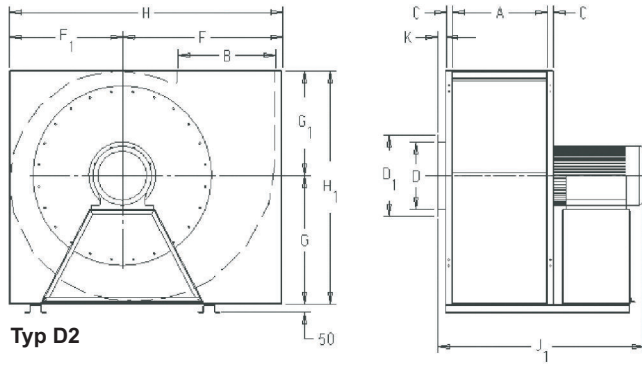
E1, J a J1 závisia od veľkosti motora

Typ	K (R-S-T)	K1	N	u1	R1	n	R	Q1	p	Q	S	T	u	Hmotnosť kg * (R-S-T)
0.40-160	26-32	46	30	6	2	72	2	116	146	232	8	28-27		
0.40-180	30-37	46	30	6	2	79,5	3	86	159	258	10	41-40		
0.40-200	66-73-43	47	30	6	2	87	95	1	94	174	284	10	46-43-46	
0.40-224	69-73-43	47	30	6	57	1	80	105	1	104	194	12	47-60-63	
0.40-250	73-82-42	50	6	67	1	80	87	2	87,5	214	349	14	94-96-88	
0.40-280	74-84-38	50	6	72	1	100	99,5	2	100	244	399	14	137-139-139	
0.40-315	89-100-47	42	50	8	84	1	100	4	111	268	444	14	141-133-139	
0.40-355	94-106-52	50	8	97	1	100	97	3	100	294	494	16	201-211-194	
0.40-400	110-123-56	50	12	112	1	100	107	3	110	324	544	16	254-263-259	
0.40-450	120-134-58	50	12	122	1	115	102	4	100	359	604	18	305-332-311	

*Hmotnosť bez štandard. motora. Všetky rozmery v mm



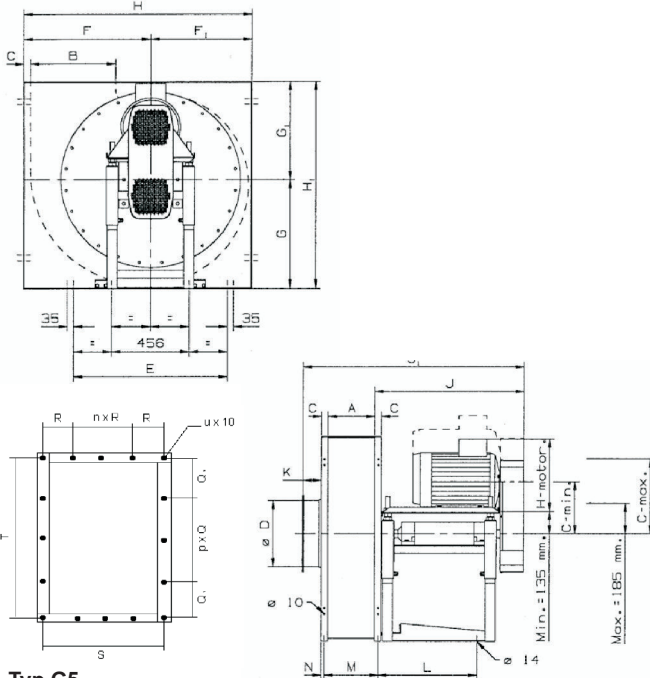
Typ D1 & D2

COMBIFAB 040

Typ D2

Typ	Ø Obež. kolesa	A	B	C	∅D	D ₁	F	F ₁	G	G ₁	H	H ₁
0.40-500	1122	355	630	50	500	538	940	735	812	748	1675	1560
0.40-560	1260	400	710	50	560	600	1049	826	910	830	1875	1740
0.40-630	1418	450	800	50	630	670	1174	926	1023	927	2100	1950

Typ	Hmotnosť kg*	K	R ₁	n	R	Q ₁	p	Q	S	T	v	u
0.40-500	713	124	206,5	1	206,5	172	2	172	413	688	12	12
0.40-560	987	128	153	1	154	192,5	2	192,5	460	770	12	14
0.40-630	1158	163	170	1	170	172	2	172	510	860	12	16

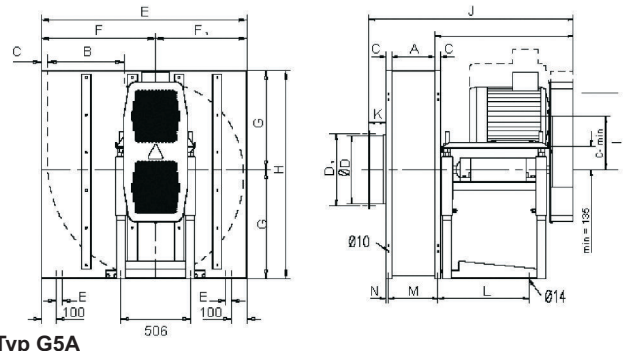
*Hmotnosť bez štandard.motora. Všetky rozmery v mm


Typ G5

Typ	Ø Obež. kolesa	A	B	C	∅D	D ₁	E	F	F ₁	G	G ₁	H	H ₁	J
0.40-250	562	180	315	30	250	289	528	476	374	410	3858	850	795	902
0.40-280	631	200	355	40	280	318	608	540	420	460	430	960	890	903
0.40-315	708	224	400	40	315	349	704	601	469	520	480	1070	1000	904
0.40-355	794	250	450	40	355	394	804	670	530	580	530	1200	1110	904
0.40-400	891	280	500	40	400	438	904	746	594	650	590	1340	1240	904
0.40-450	1000	315	560	40	450	488	1044	832	658	730	660	1490	1390	904

Typ	Hmotnosť kg*	K	R ₁	n	R	Q ₁	p	Q	S	T	u						
0.40-250	273-275-267	73-77-42	596	214	13	6	67	1	80	87	2	87,5	214	349	14		
0.40-280	313	313	308	7-484-38	591	244	18	6	72	1	100	99,5	2	100	244	399	14
0.40-315	338	330	336	89-100-47	592	268	18	8	84	1	100	4	111	268	444	14	
0.40-355	386-396-384	94-106-52	592	294	18	8	97	1	100	97	3	100	294	494	16		
0.40-400	435-446-440	110-123-120	592	324	18	12	112	1	100	107	3	110	324	544	16		
0.40-450	491-517-496	120-134-58	592	359	18	12	122	1	115	102	4	100	359	604	18		

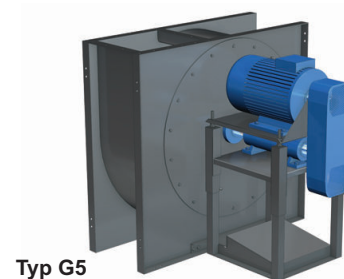
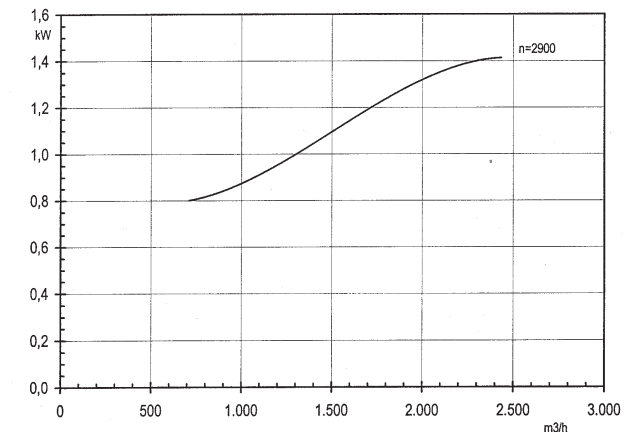
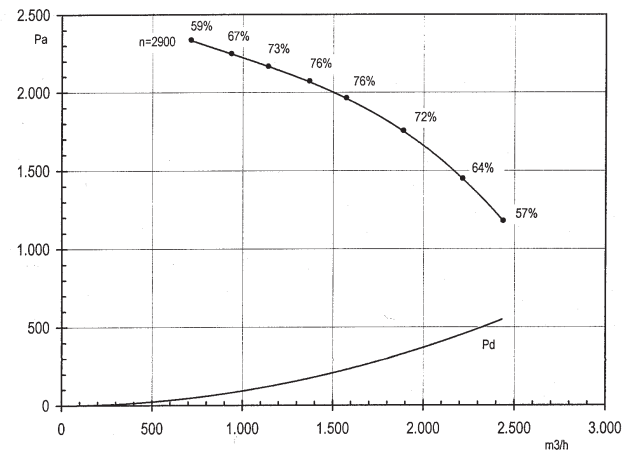
* Hmotnosť bez motora

COMBIFAB 040

Typ G5A

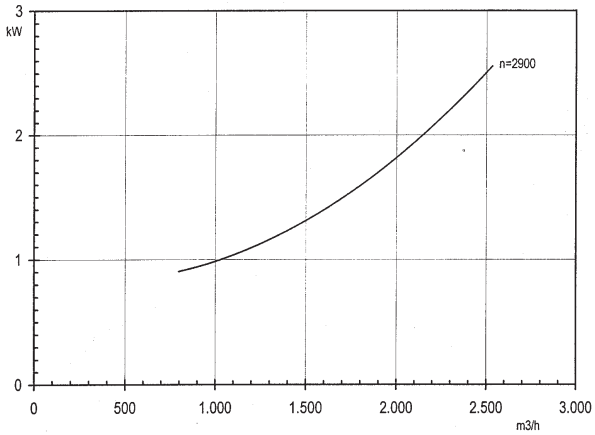
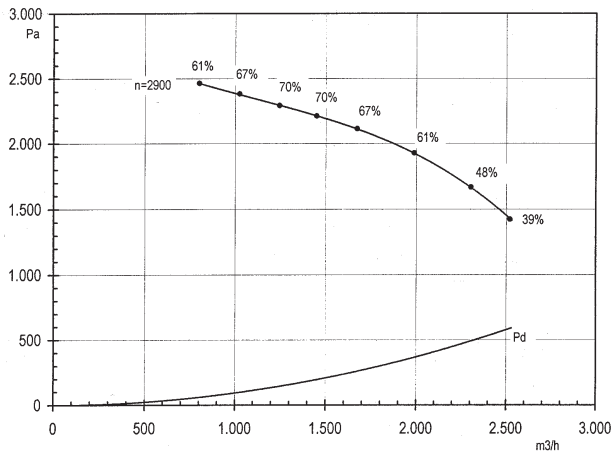
Typ	Ø Obež. kolesa	A	B	C	∅D	D ₁	E	F	F ₁	G	G ₁	H	H ₁	J	J ₁	Hmotnosť kg* (R-S-T)		
0.40-500	1122	355	630	50	500	538	60	939,5	735,5	812	748	1875	1560	1048	1575	675	697	690

Typ	K	L	M	N	u ₁	R ₁	n	R	Q ₁	p	Q	S	T	u	u
0.40-500	124-144-58,8	730	409	23	12	2	204,5	4	171	409	684	12	12	12	12

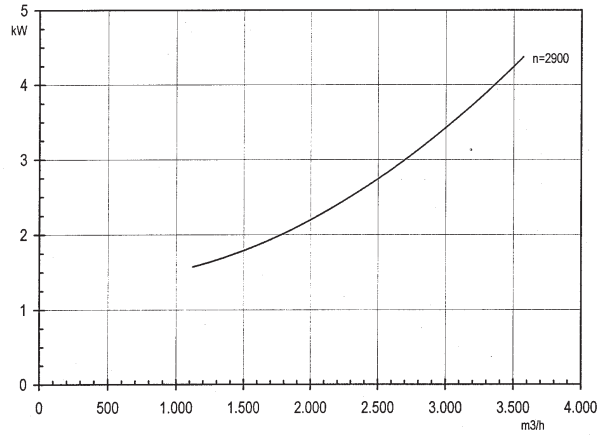
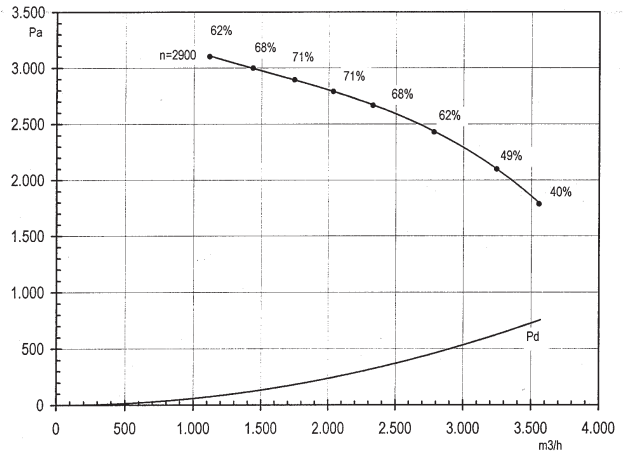
*Hmotnosť bez štandard.motora. Všetky rozmery v mm

COMBIFAB R-040-160

Typ G5

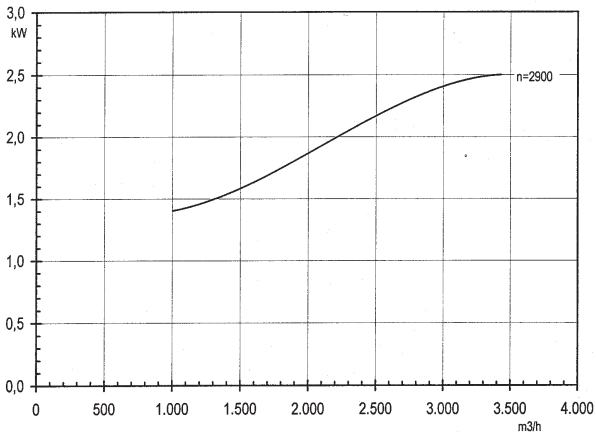
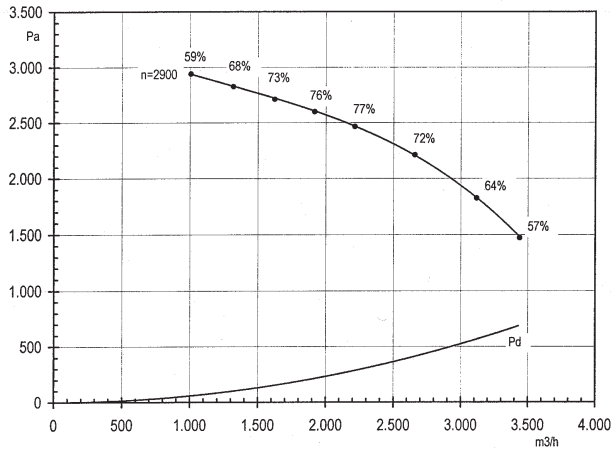
COMBIFAB S-040-160



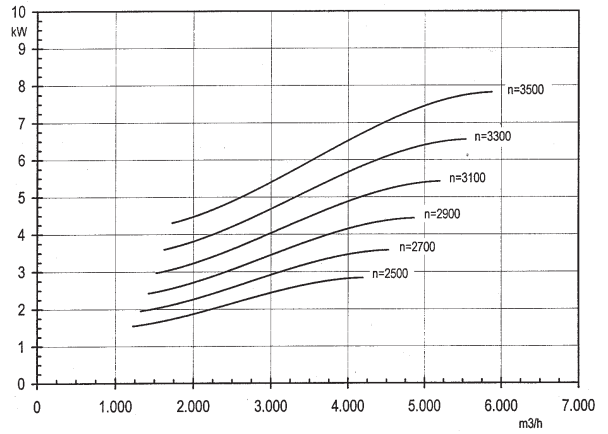
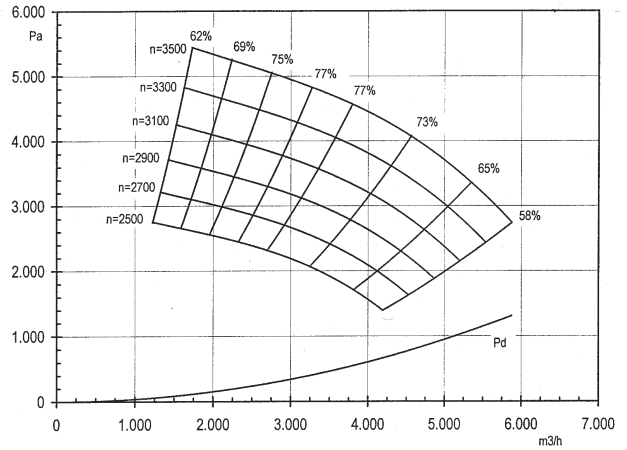
COMBIFAB S-040-180

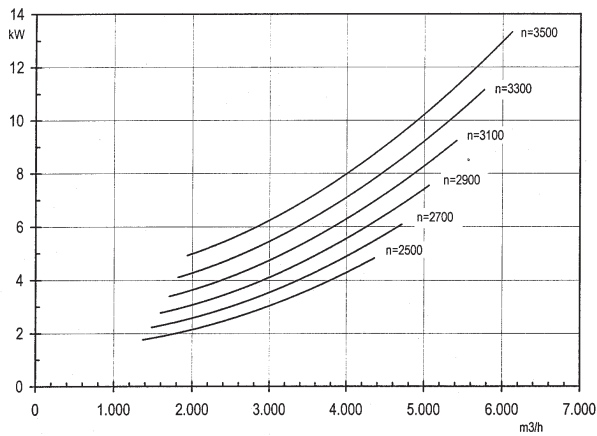
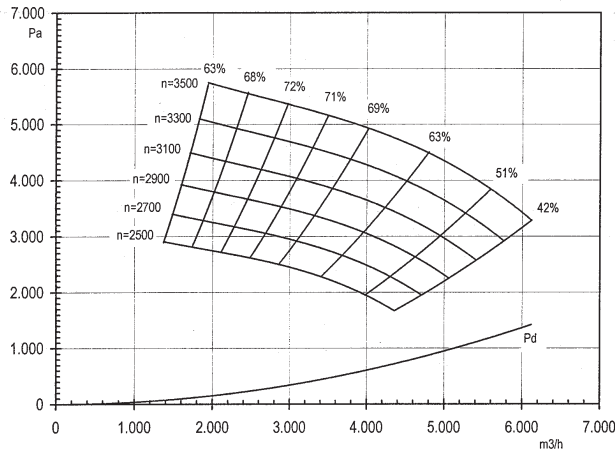
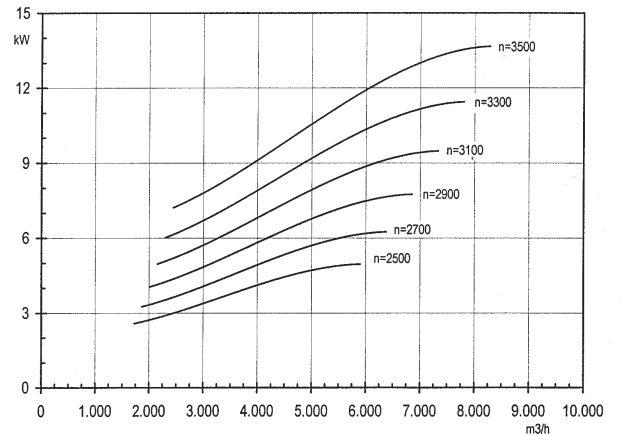
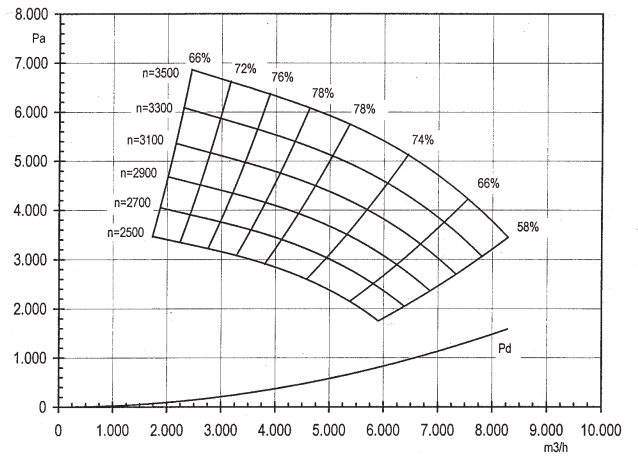
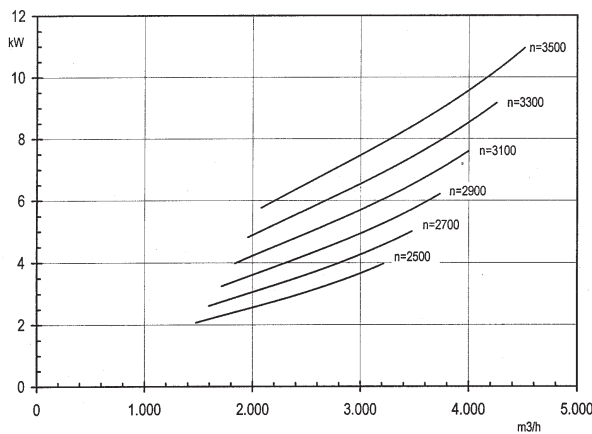
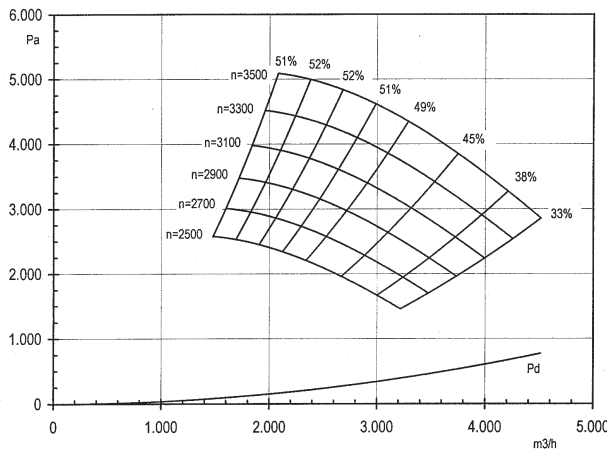
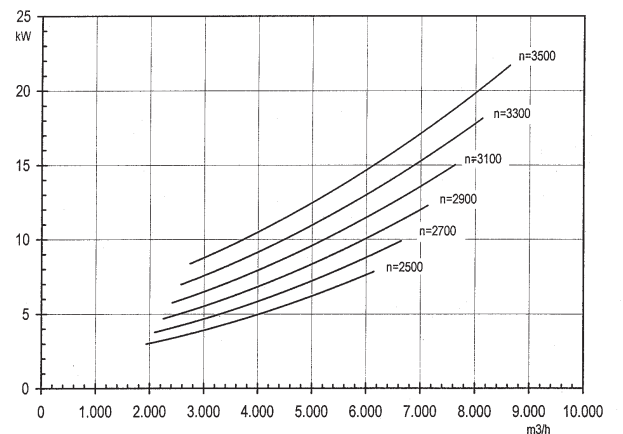
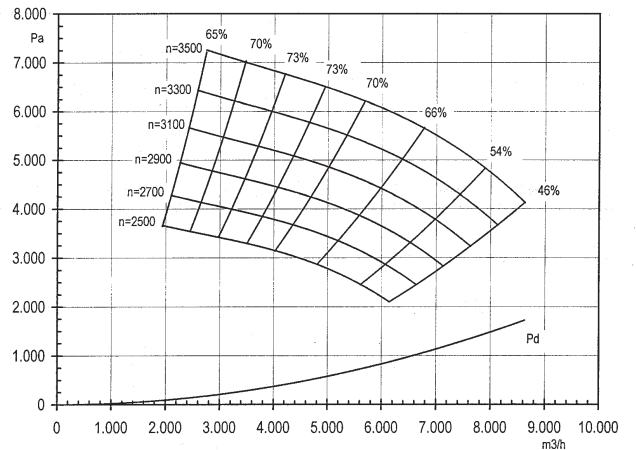


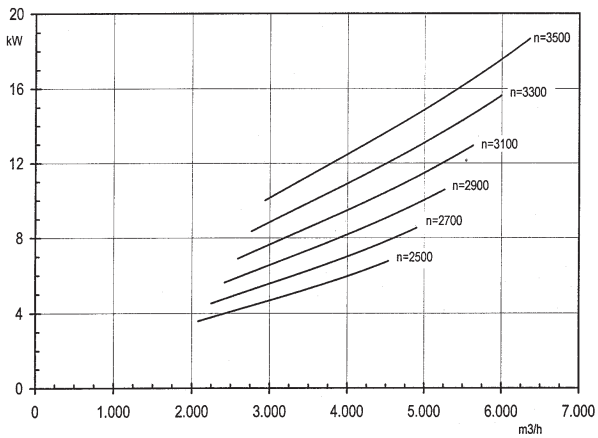
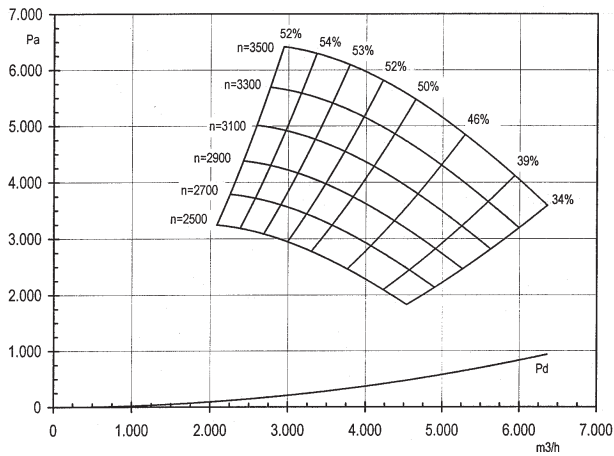
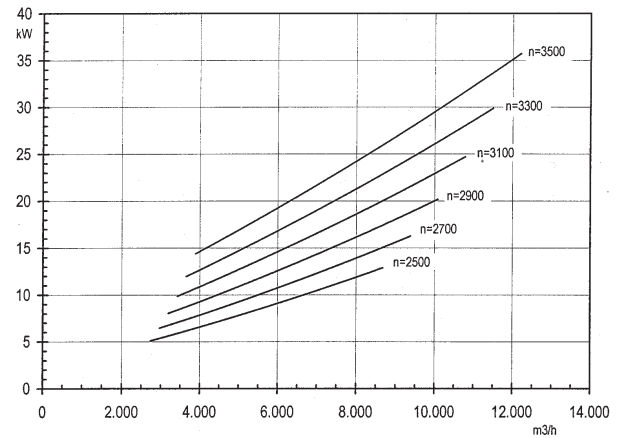
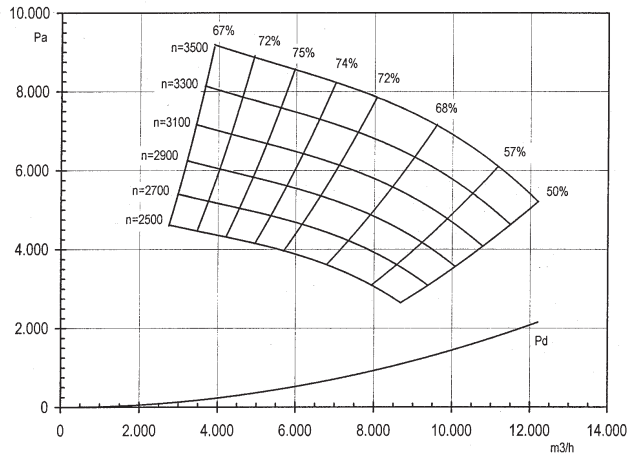
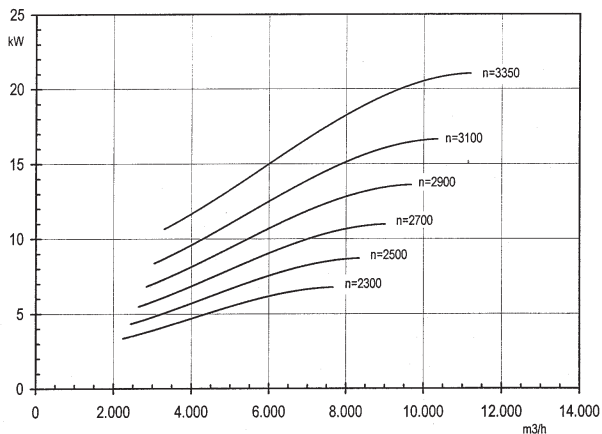
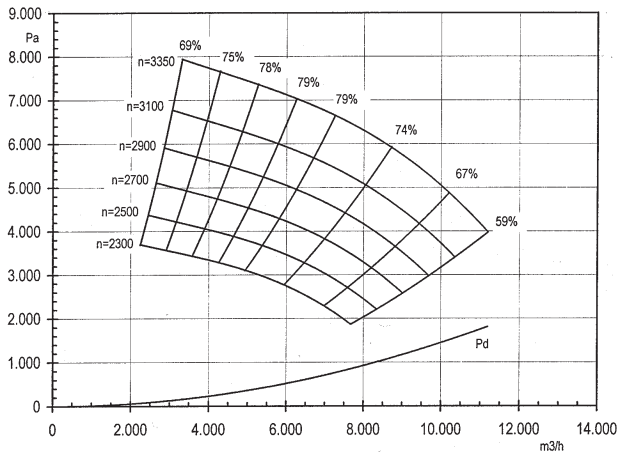
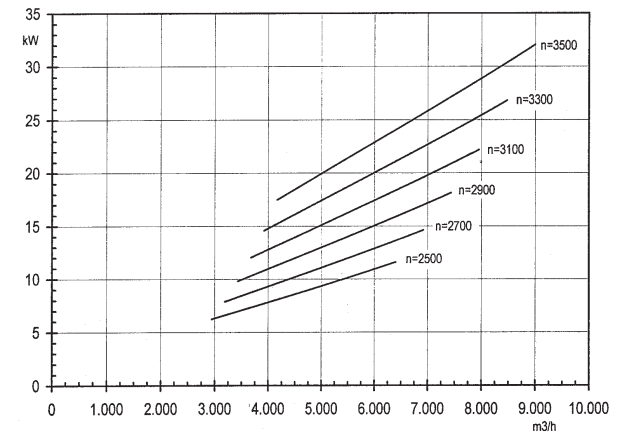
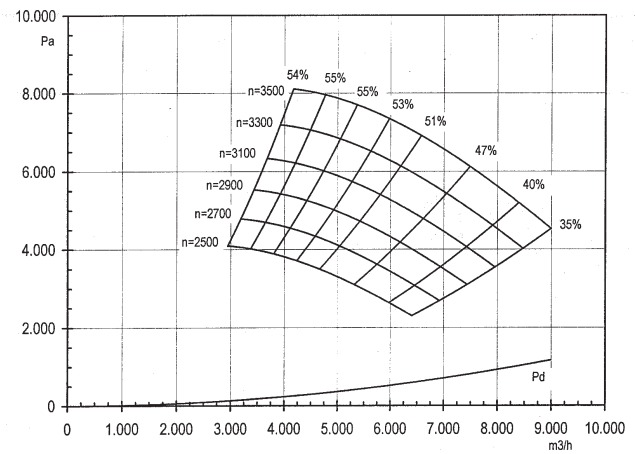
COMBIFAB R-040-180

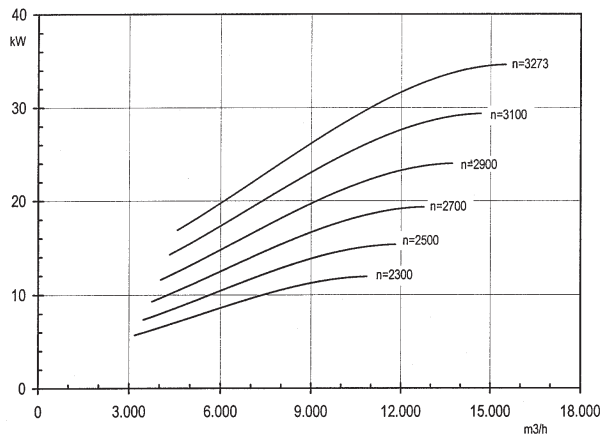
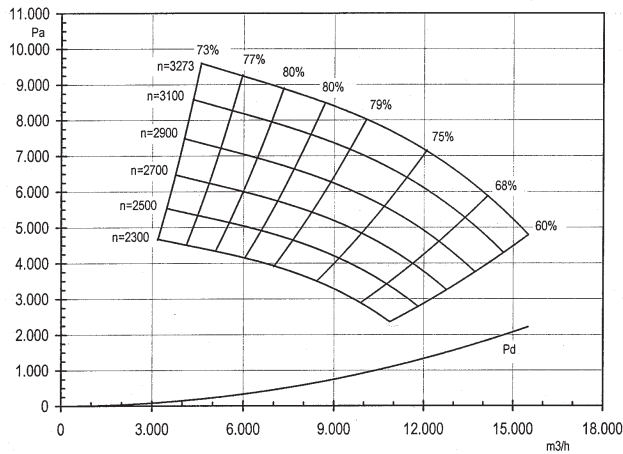
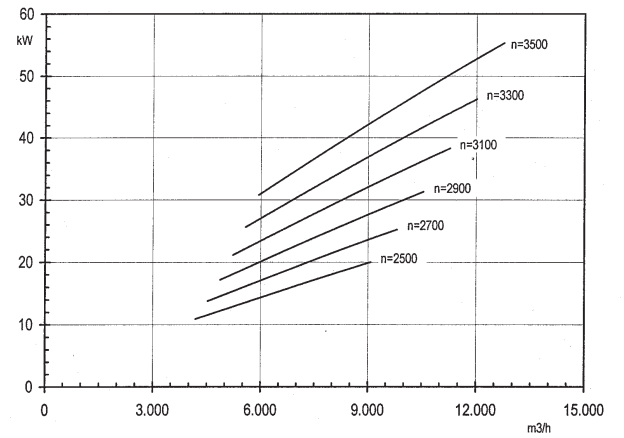
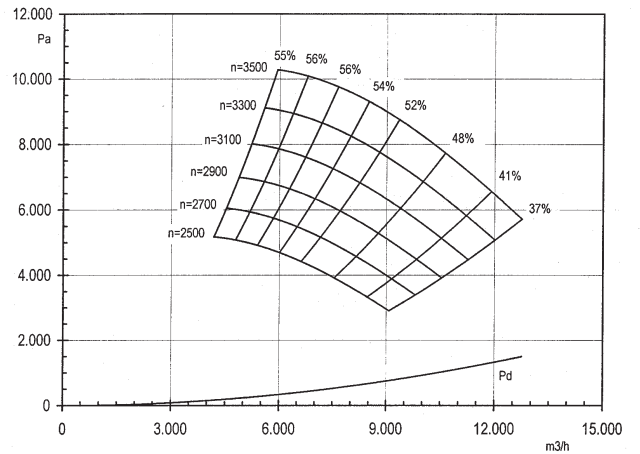
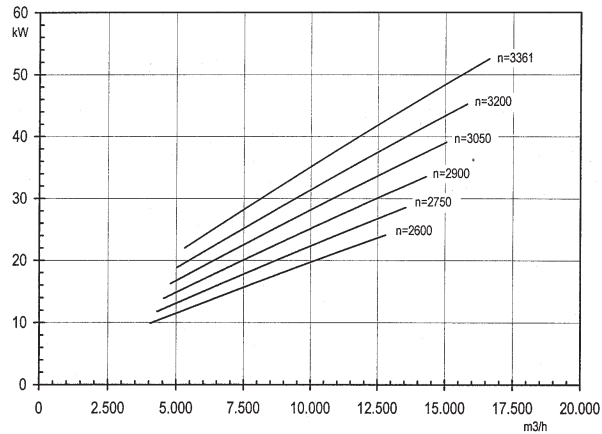
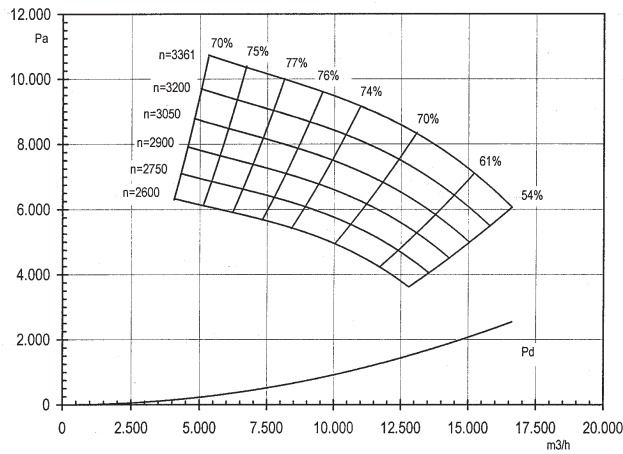
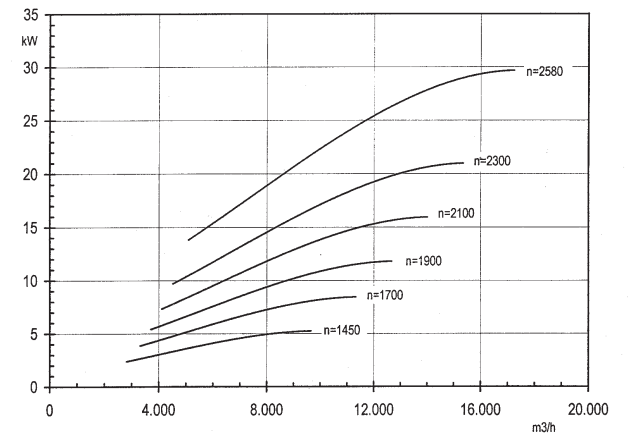
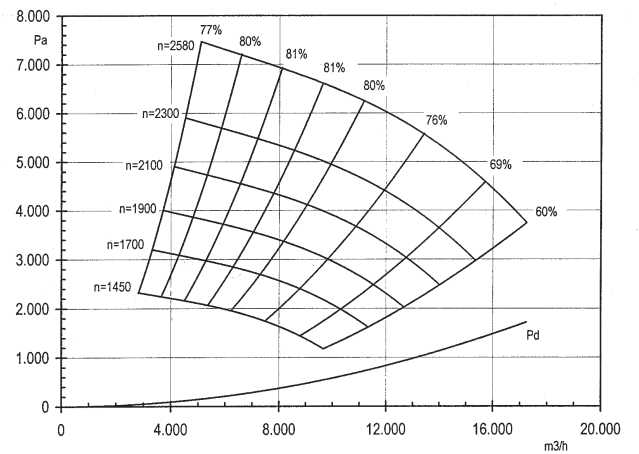


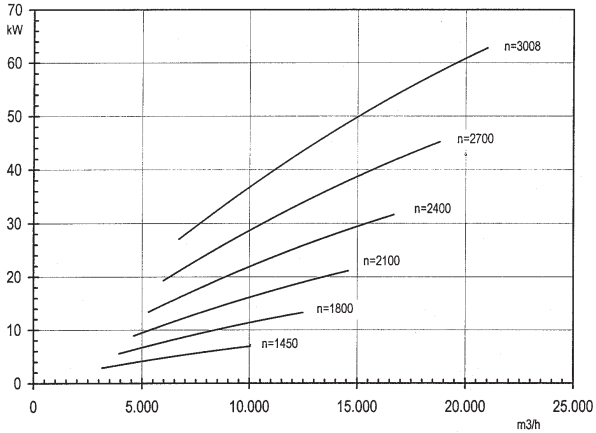
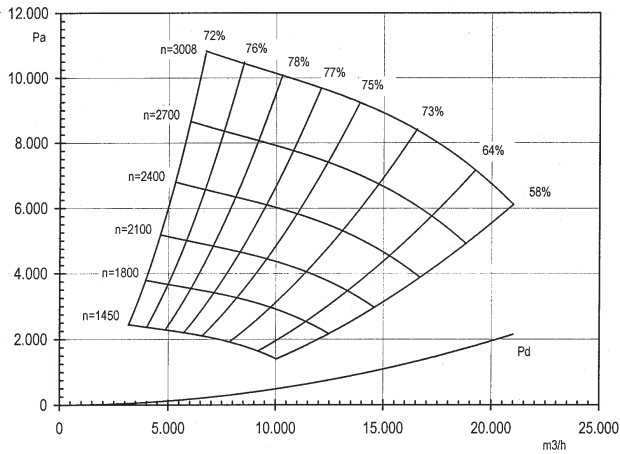
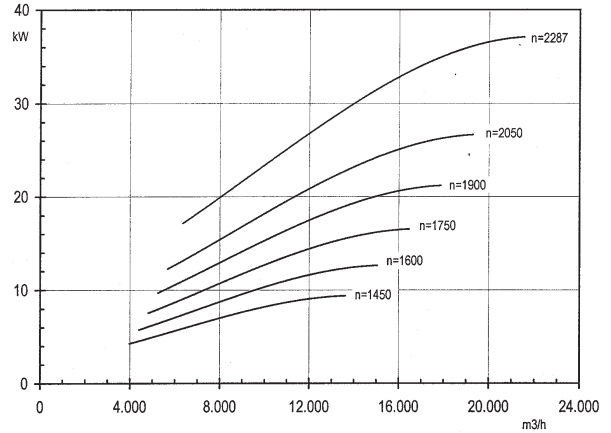
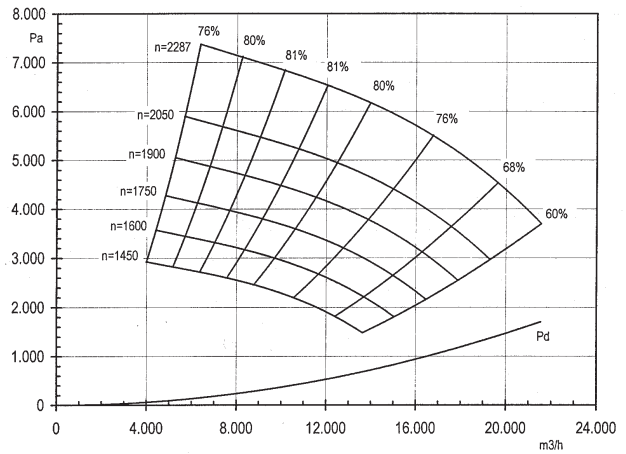
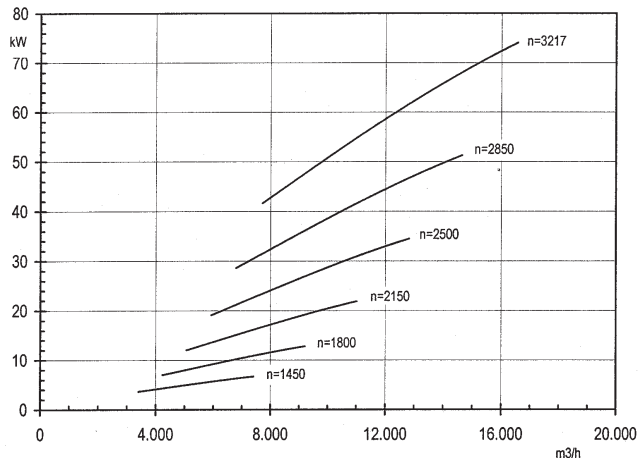
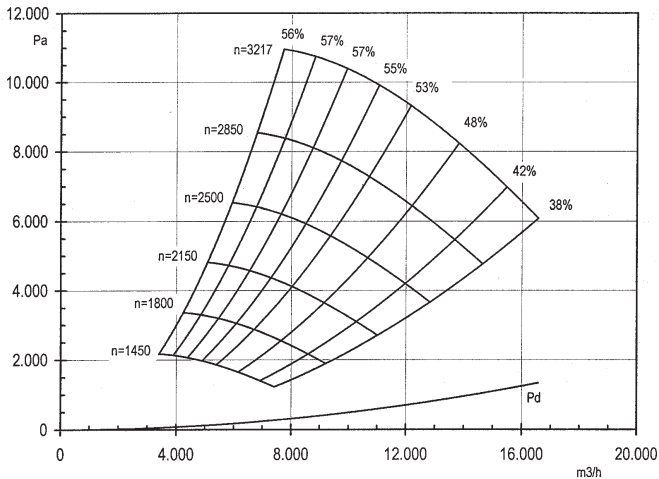
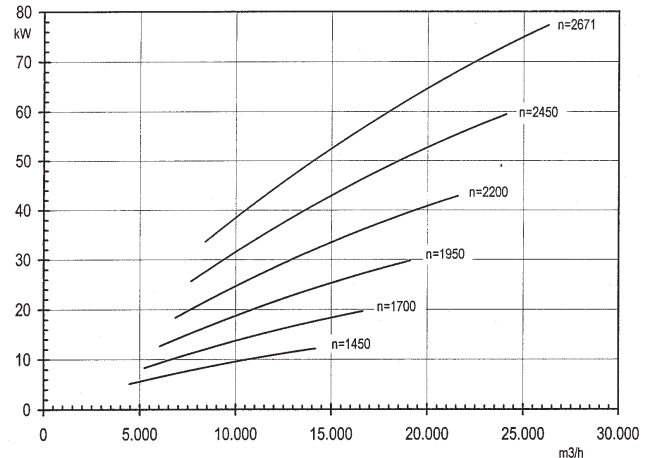
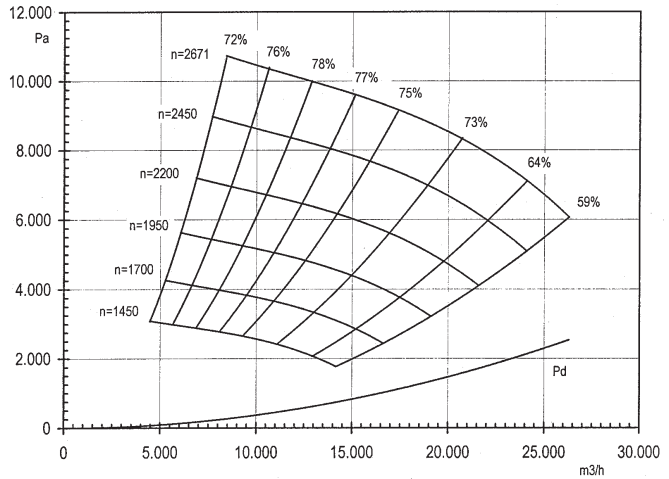
COMBIFAB R-040-200

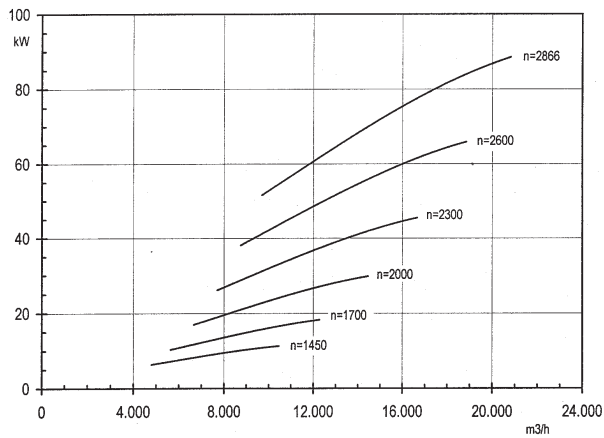
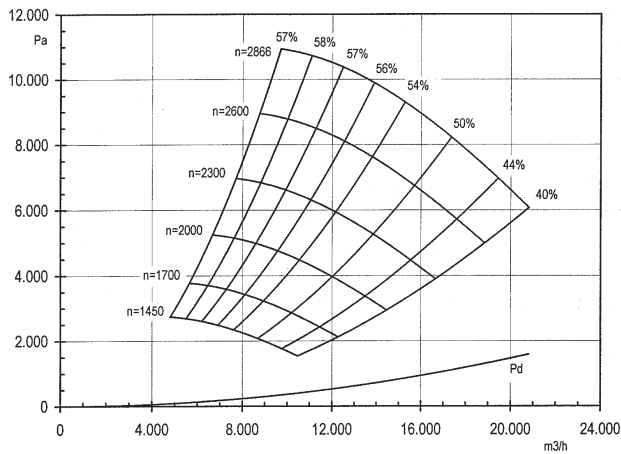
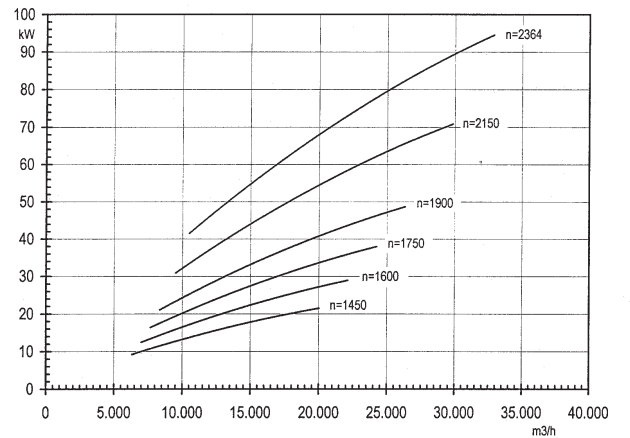
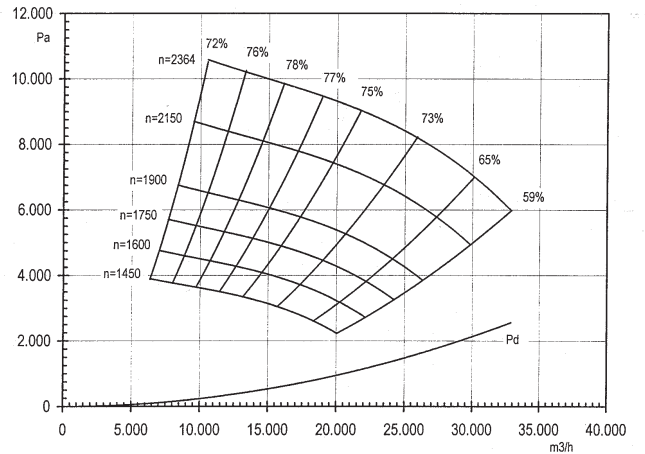
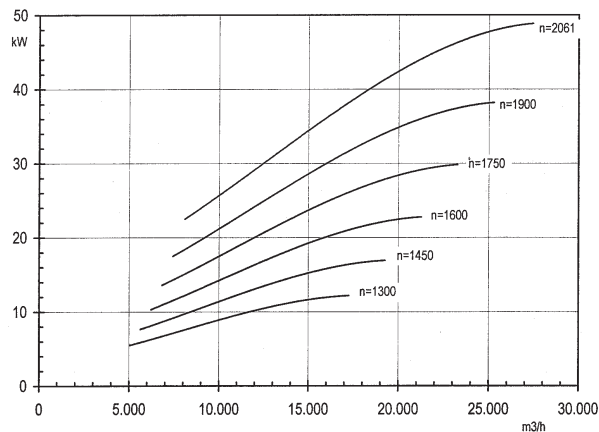
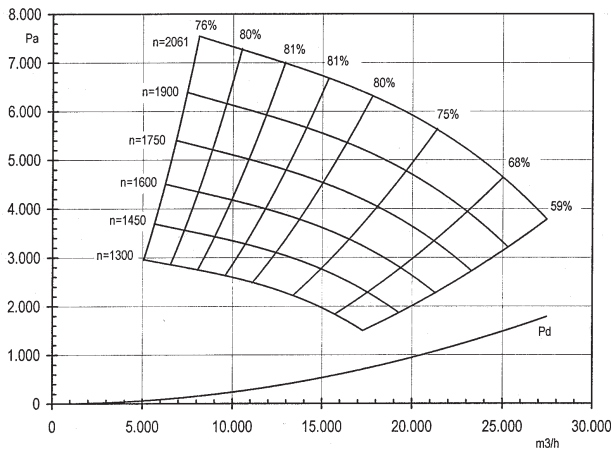
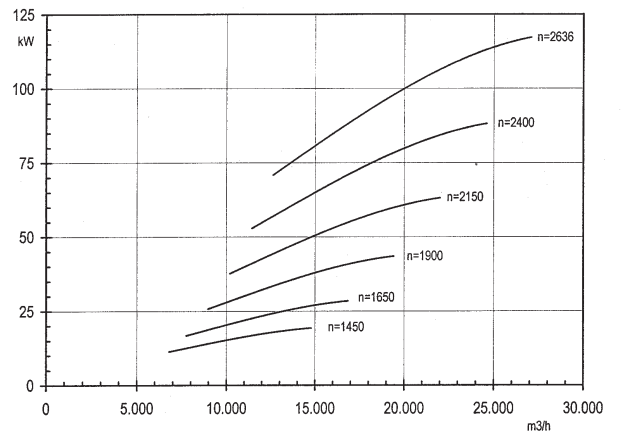
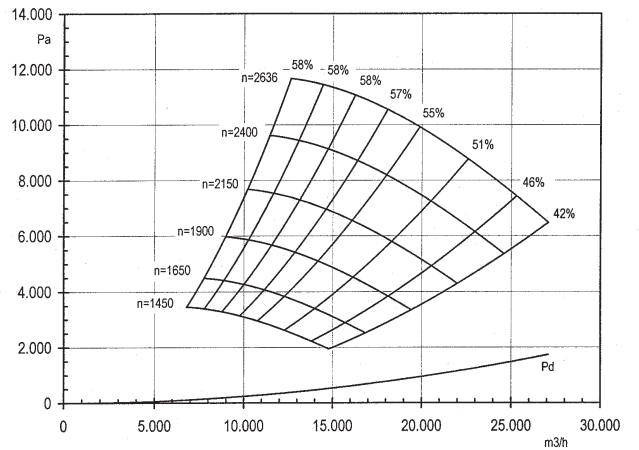


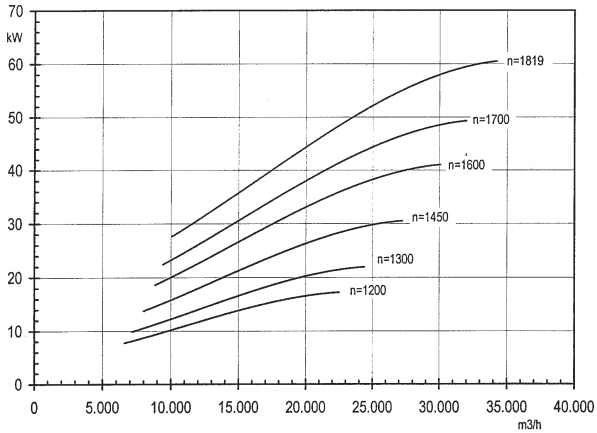
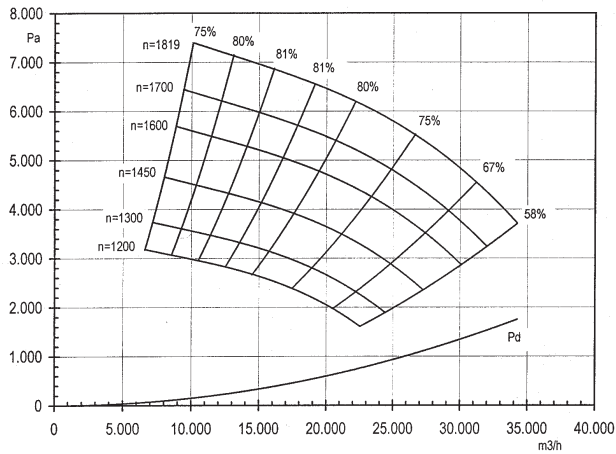
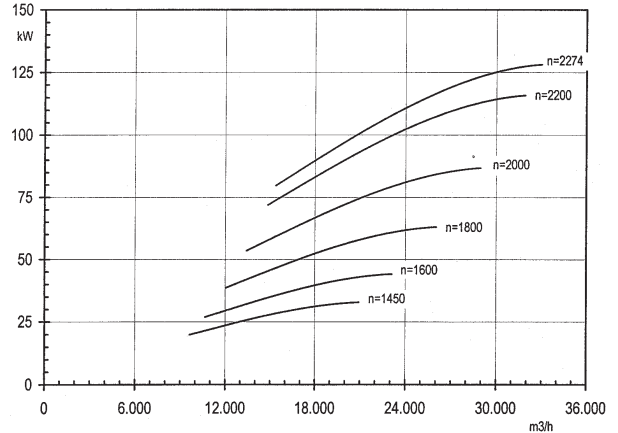
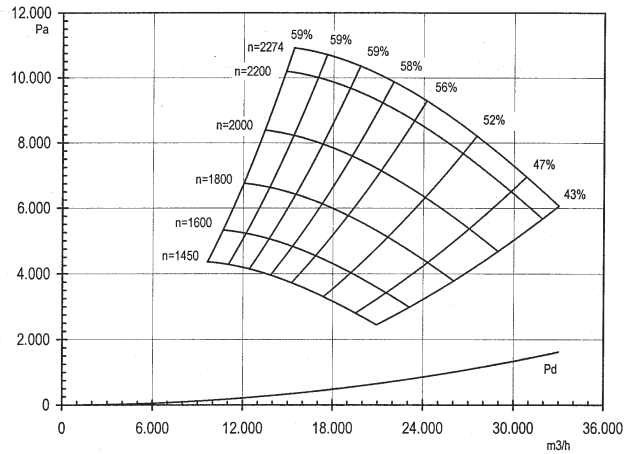
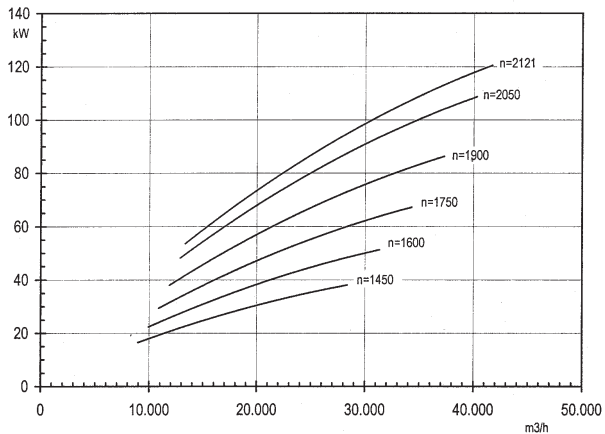
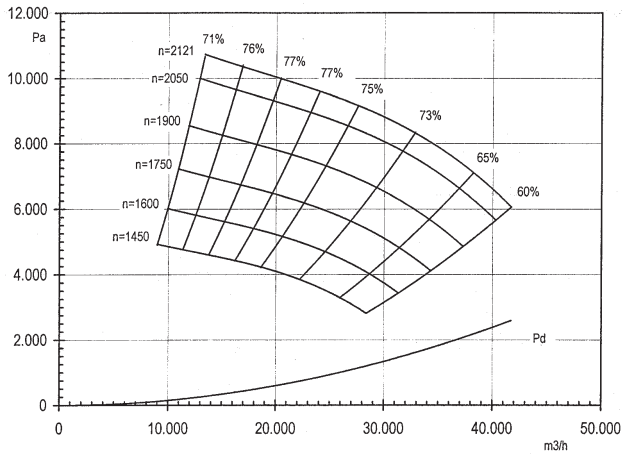
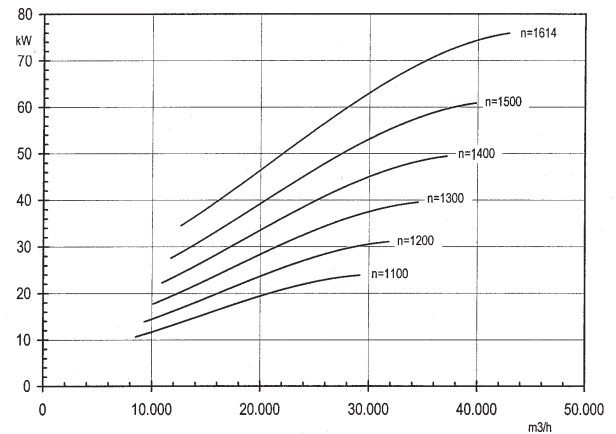
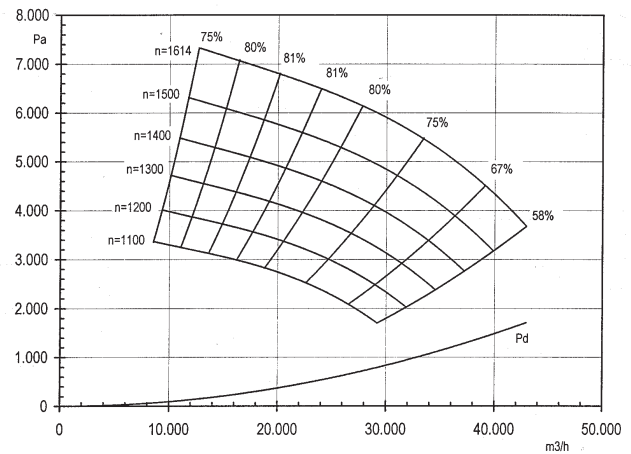
COMBIFAB S-040-200

COMBIFAB R-040-224

COMBIFAB T-040-200

COMBIFAB S-040-224


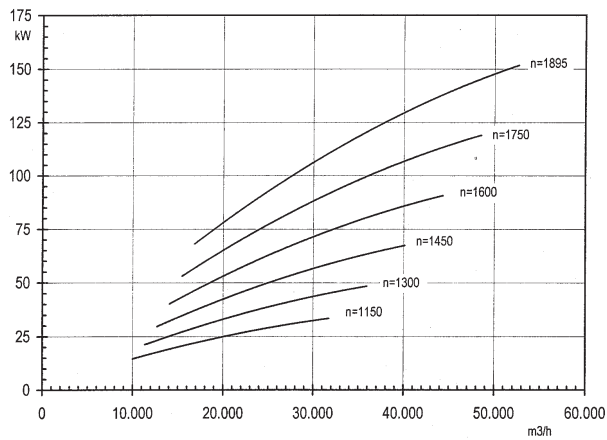
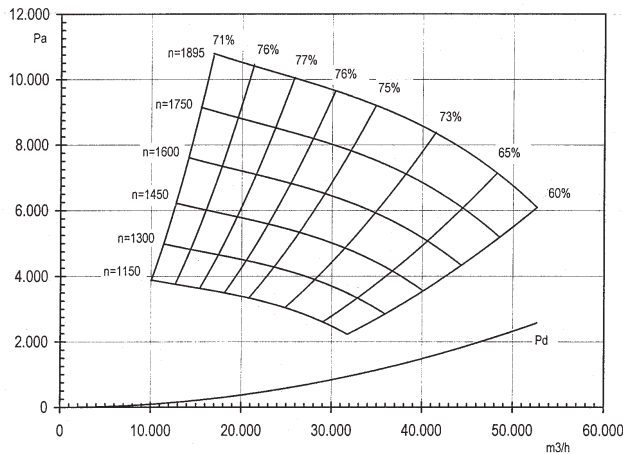
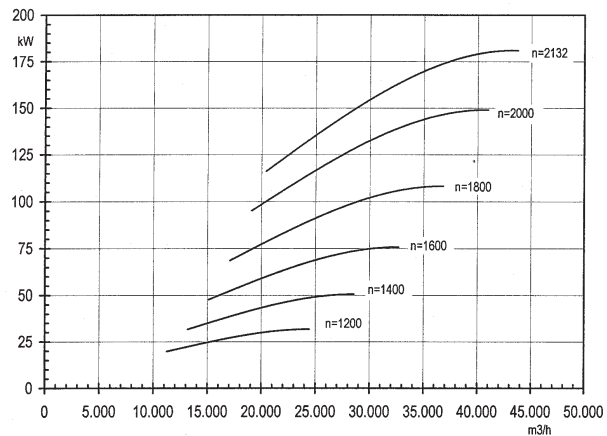
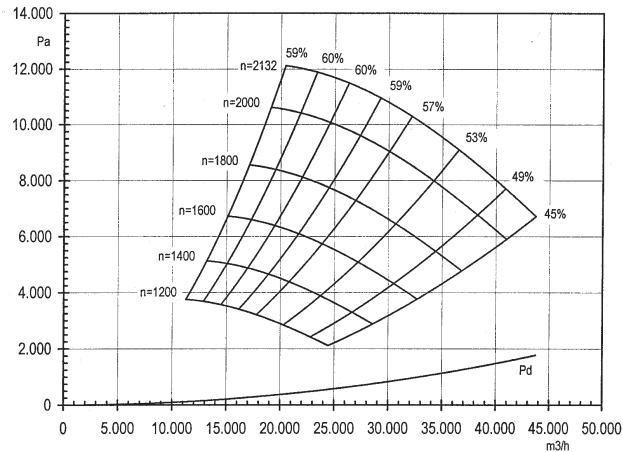
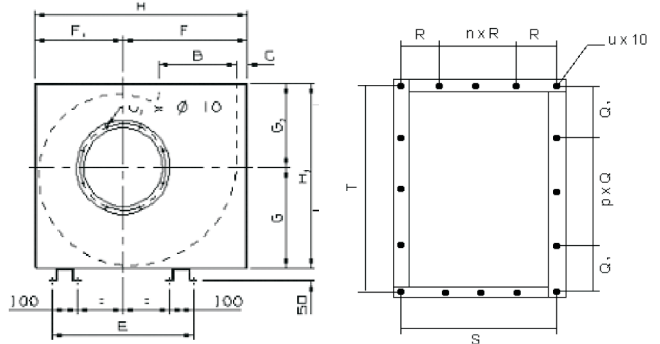
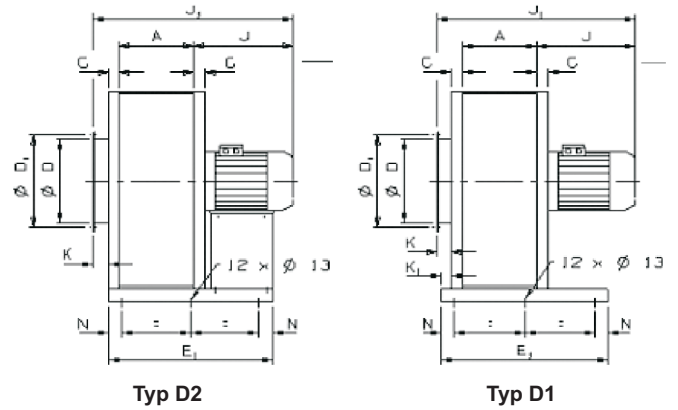
COMBIFAB T-040-224

COMBIFAB S-040-250

COMBIFAB R-040-250

COMBIFAB T-040-250


COMBIFAB R-040-280

COMBIFAB T-040-280

COMBIFAB S-040-280

COMBIFAB R-040-315


COMBIFAB S-040-315

COMBIFAB R-040-355

COMBIFAB T-040-315

COMBIFAB S-040-355


COMBIFAB T-040-355

COMBIFAB S-040-400

COMBIFAB R-040-400

COMBIFAB T-040-400


COMBIFAB R-040-450

COMBIFAB T-040-450

COMBIFAB S-040-450

COMBIFAB R-040-500


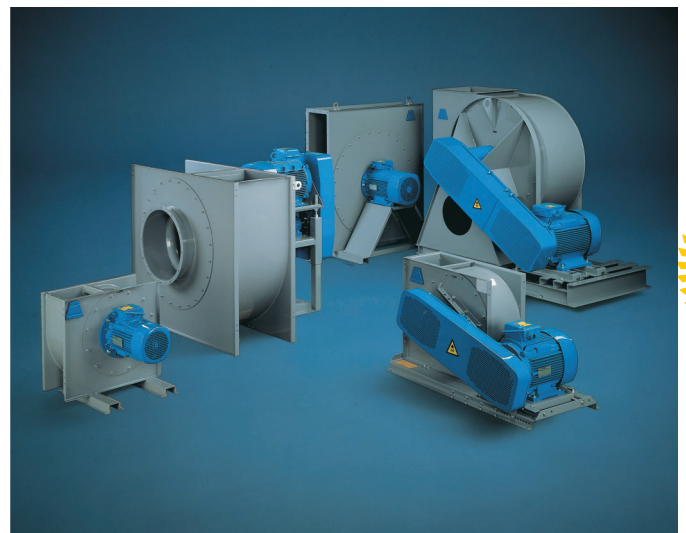
COMBIFAB S-040-500

COMBIFAB T-040-500

COMBIFAB 056 - ROZMERY


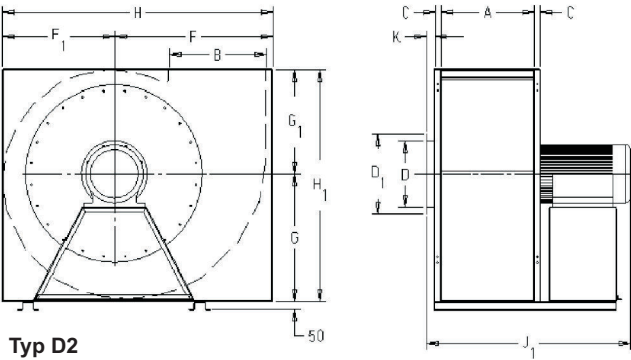
Typ	Ø Obež. kolesa	A	B	C	Ø D	D1	E	E1	F	F1	G	G1	H	H1	J	J1
056-224	355	200	224	30	224	261	447	353	247	280	240	600	520			
056-250	398	224	250	30	250	289	497	392	278	325	265	670	590			
056-280	447	250	280	40	280	318	563	447	313	360	300	760	660			
056-315	501	280	315	40	315	349	633	492	354	405	335	850	740			
056-355	562	315	355	40	355	394	723	552	398	450	380	950	830			
056-450	631	400	450	40	450	488	879	684	496	580	460	1180	1040			
056-500	708	450	500	40	500	538	999	763	557	640	520	1320	1160			

E1, J a J1 závisia od veľkosti motora

Typ	K (R-S-T)	K1	N	u1	R1	n	R	Q1	p	Q	S	T	u	Hmotnosť kg (R-S-T)*
056-224	43-51-30	46	30	6	76	1	80	85	1	86	232	256	12	32-35-34
056-250	45-54-30	46	30	6	78	1	100	3	94	256	282	12	47-50-45	
056-280	41-51-21	50	6	97	1	100	3	108	294	324	12	71-74-74		
056-315	53-64-31	50	8	82	2	80	120	1	119	324	359	14	96-96-135	
056-355	61-73-31	50	8	79,5	2	100	100	2	99,5	359	399	16	128-124-137	
056-450	81-97-34	42	50	12	102	3	80	4	123,5	444	494	18	200-210-213	
056-500	72-90-33	50	12	97	3	100	5	109	494	545	20	306-273-273		

* Hmotnosť bez motora

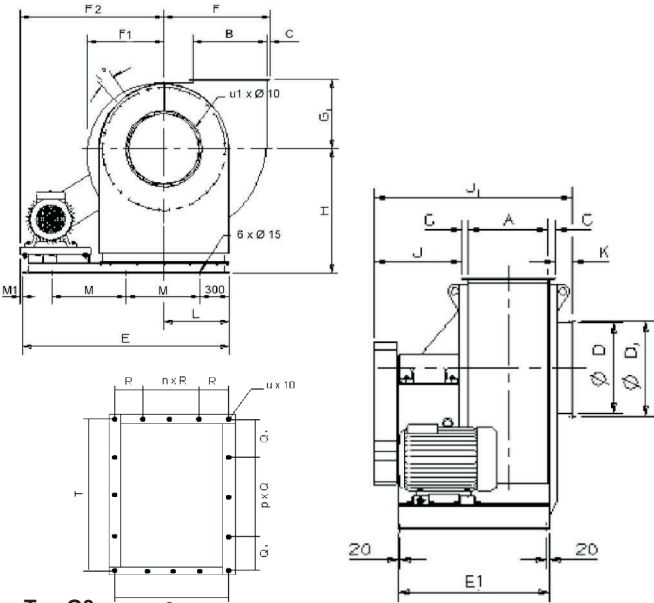


COMBIFAB R56

Typ D2

Typ	∅ Obež. kolesa	A	B	C	D	D ₁	F	F ₁	G	G ₁	H	H ₁
056-560	891	500	560	40	560	600	851	614	710	570	1465	1280
056-630	1000	560	630	40	630	670	950	690	794	641	1640	1435
056-710	1122	630	710	50	710	750	1070	773	888	638	1843	1526
056-800	1260	710	800	50	800	848	1195	866	991	791	2061	1782
056-900	1418	800	900	50	900	948	1340	973	1110	922	2313	2032

Hmotnosť												
Typ	kg *	K	R ₁	n	R	Q ₁	p	Q	S	T	v	u
056-560	540	83,5	109	3	110	102	4	101	548	608	10	22
056-630	619	94	102	4	101		4	113	608	678	10	24
056-710	1038	92		4	172,5		4	192,5	690	770	12	16
056-800	1247	99		4	192,5		5	172	770	860	12	18
056-900	1392	135	172	3	172	192	3	192	860	960	12	20

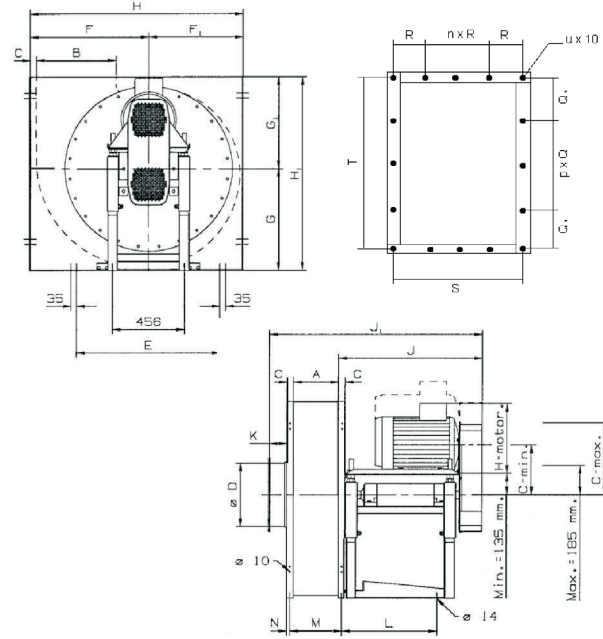
*Hmotnosť bez štandard.motora. Všetky rozmery v mm

COMBIFAB 0.56

Typ G3

Typ	∅ Obež. kolesa	A	B	C	D	D ₁	E	E ₁	F	F ₁	F ₂	G ₁	H	I	J	J ₁	K
056-630	1000	560	630	44	630	670	1974	1116	954	689	1374	630	1160	15	690	1428	90
056-710	1122	630	710	55	710	750	2094	1190	1076,5	772	1434	627	1270	10	750	1578	88
056-800	1260	710	800	55	800	848	2264	1376	1201,5	865	1544	780	1420	10	855	1770	95
056-900	1418	800	900	55	900	948	2579	1465	1345,5	972	1771,5	910	1590		855	1896	131

Typ	L	M	M ₁	u ₁	R ₁	n	R	Q ₁	p	Q	S	T	v	u	Hmotnosť kg *
056-630	600	652	16	102	4	101		6	113	608	678	10	24	834	
056-710	660	712	16		4	172,5		4	192,5	690	770	12	16	1037	
056-800	745	794,5	25	16		4	192,5		5	172	770	860	12	18	1315
056-900	832,5	952	25	16	172	3	172	192	3	192	860	960	12	20	

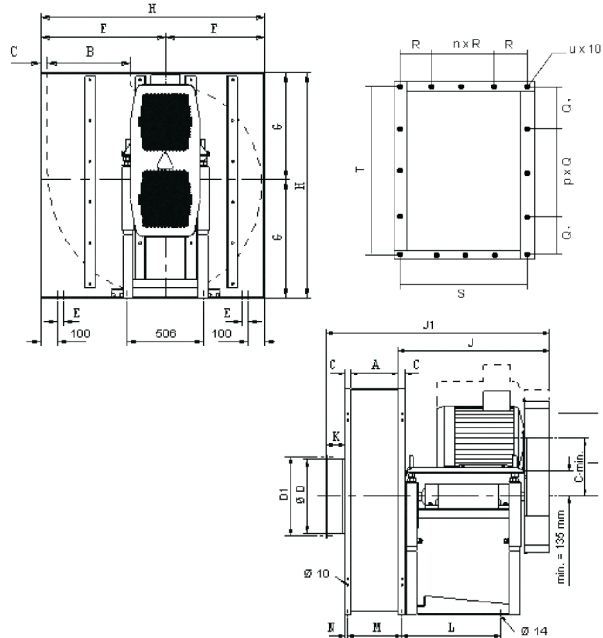
* Hmotnosť bez motora

COMBIFAB 0.56

Typ G5

Typ	∅ Obež. kolesa	A	B	C	∅ D	D ₁	E	F	F ₁	G	G ₁	H	H ₁	J	J ₁
056-500	794	450	500	40	500	538	864	763	557	640	520	1320	1160	904	

Typ	Hmotnosť kg *(R-S-T)	K	R-S-T	L	M	N	u ₁	R ₁	n	R	Q ₁	p	Q	S	T	u
056-500	438-440-447	72-88-33	592	484	18	12	97	3	100		5	109	494	545	20	

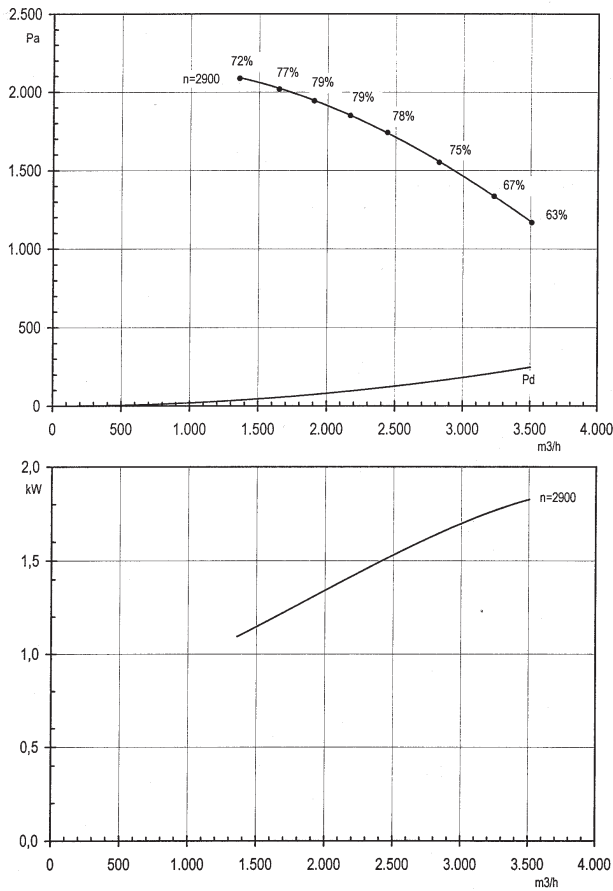
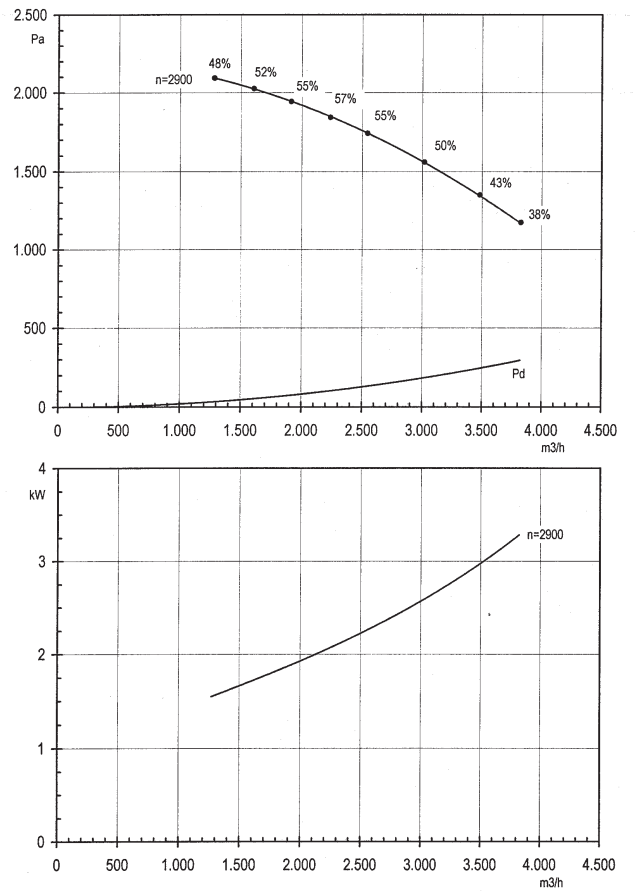
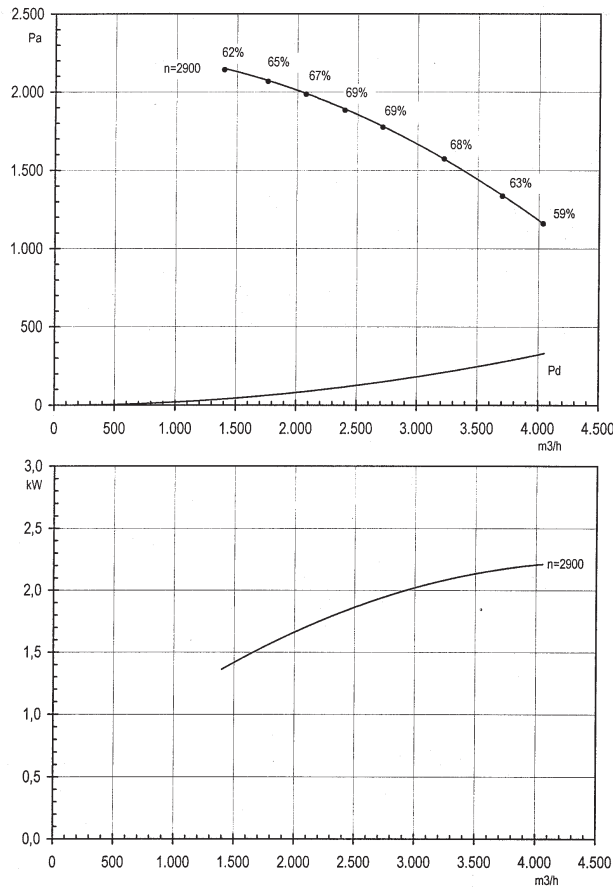
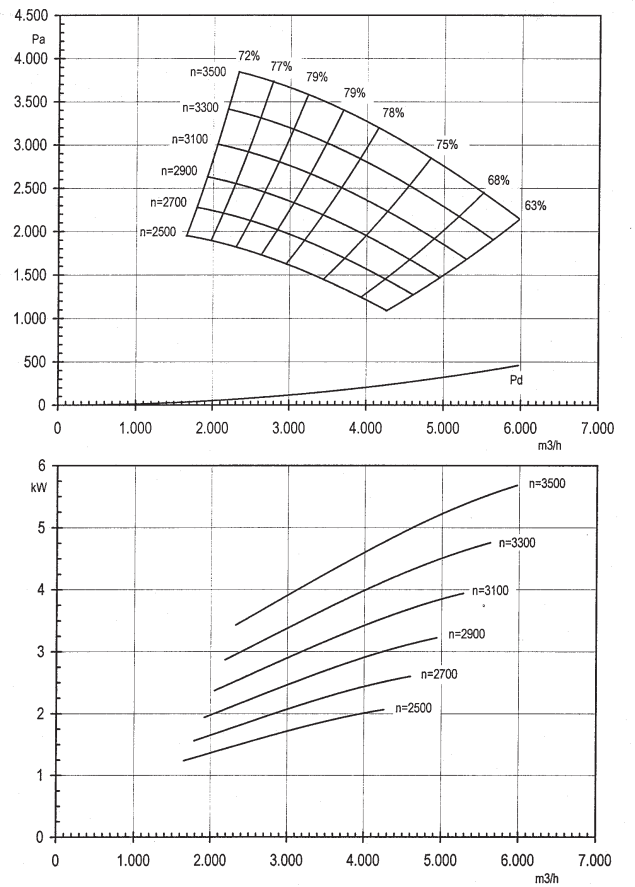
*Hmotnosť bez štandard.motora. Všetky rozmery v mm

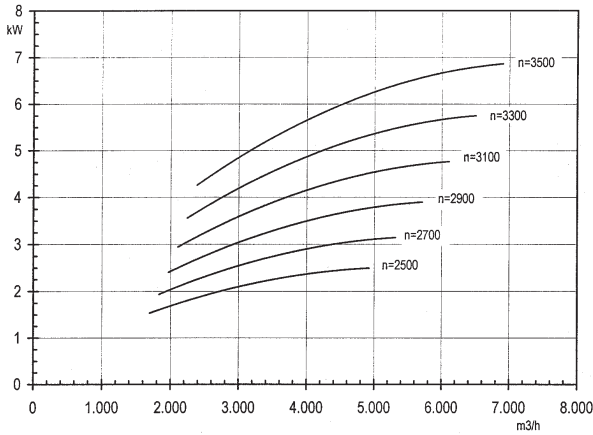
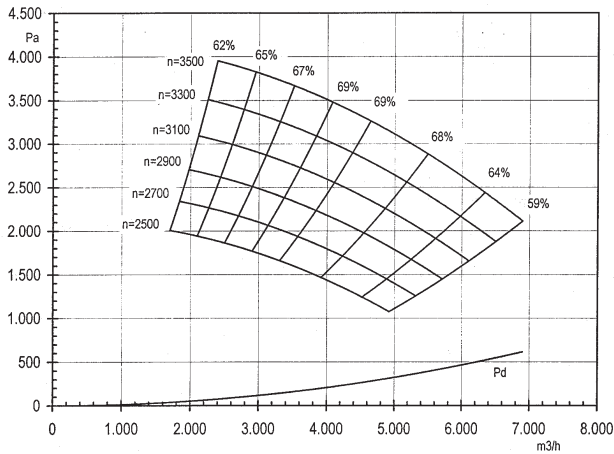
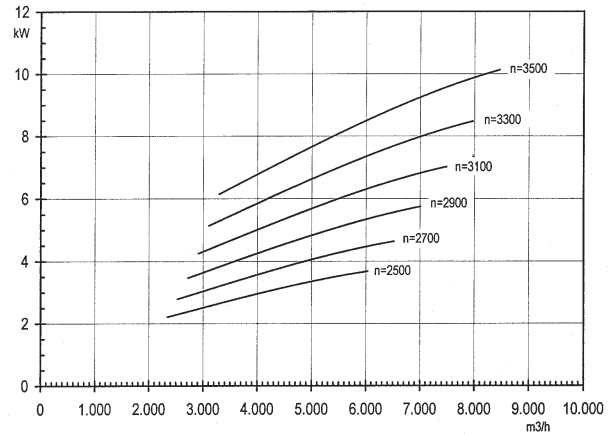
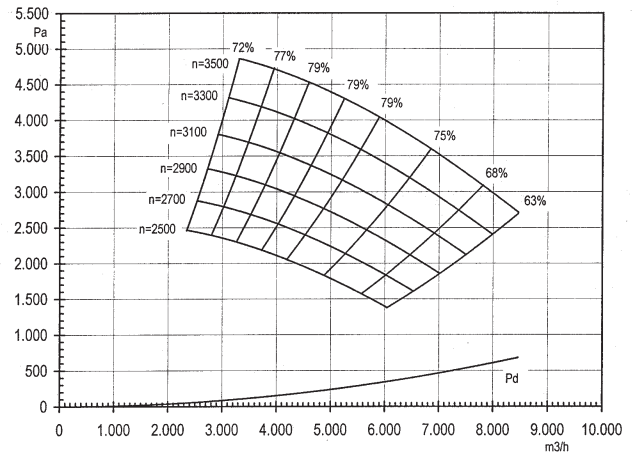
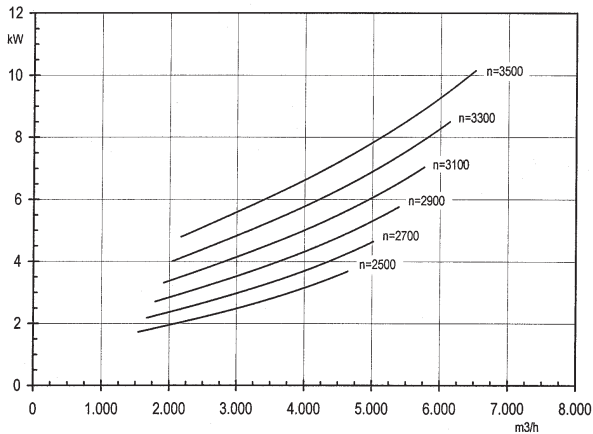
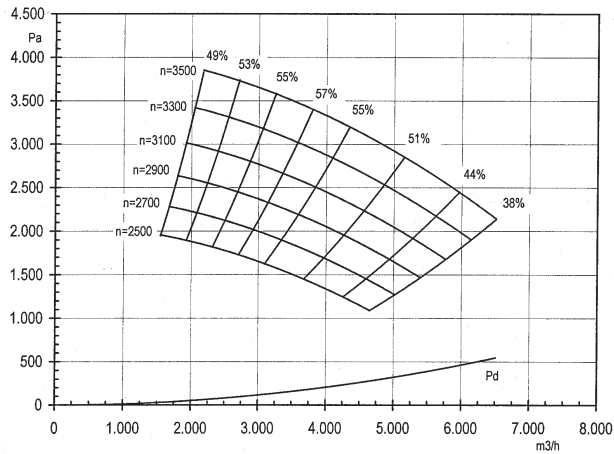
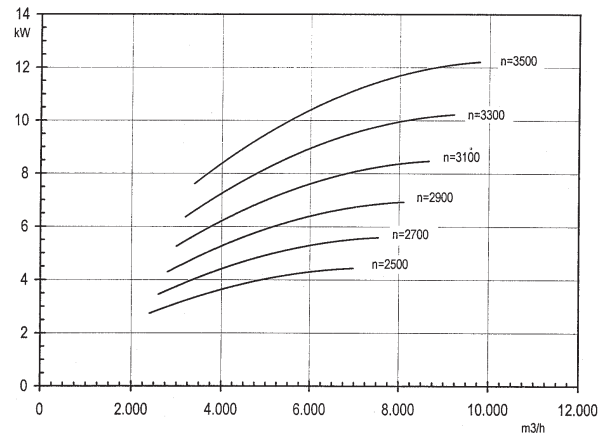
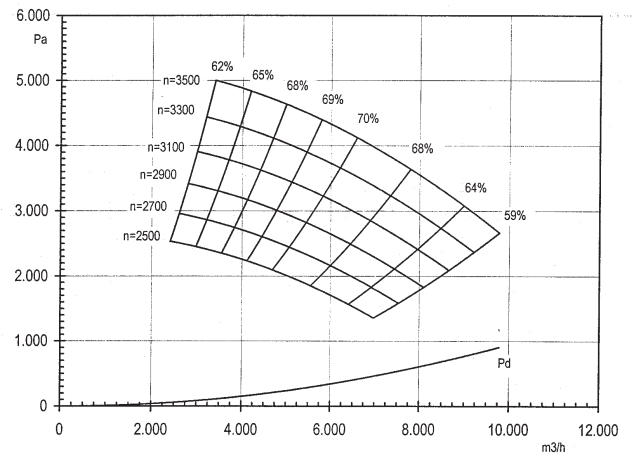
COMBIFAB 0.56

Typ G5-A

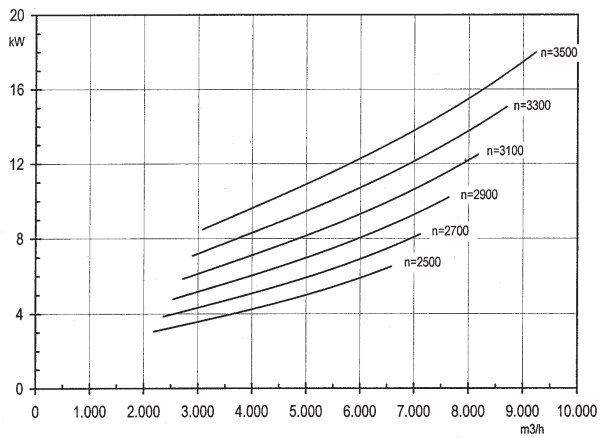
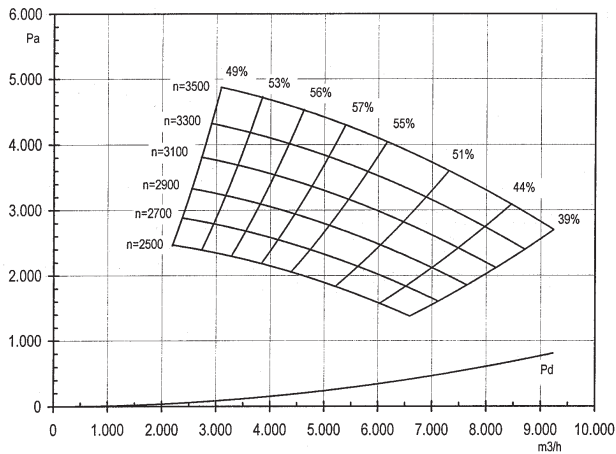
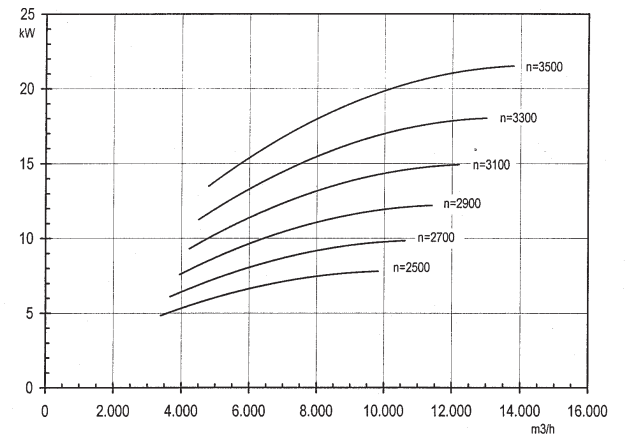
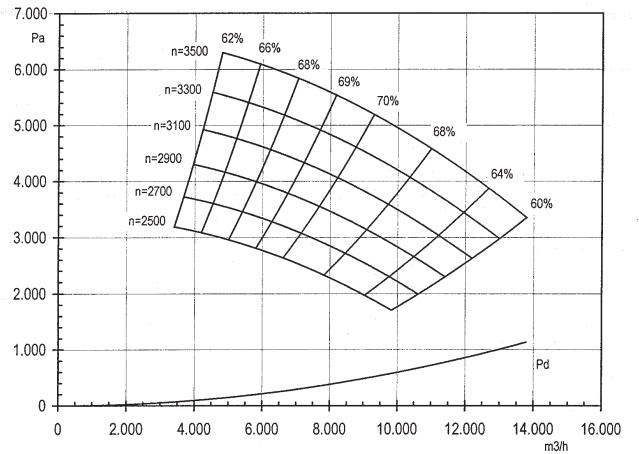
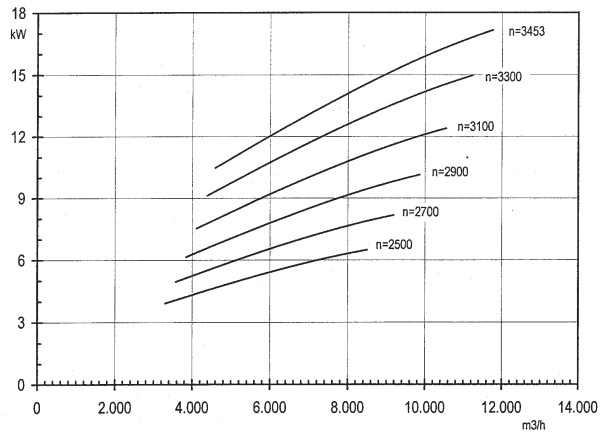
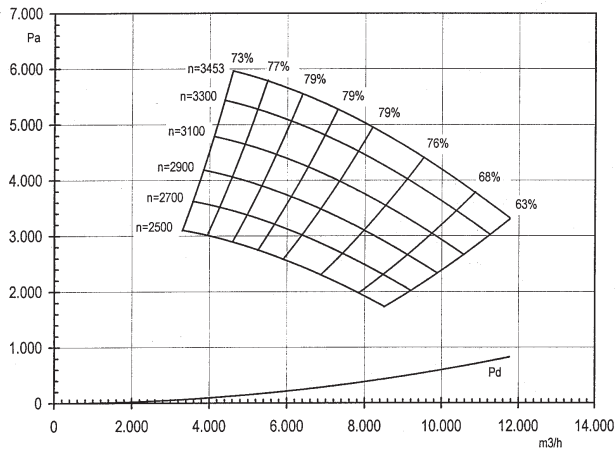
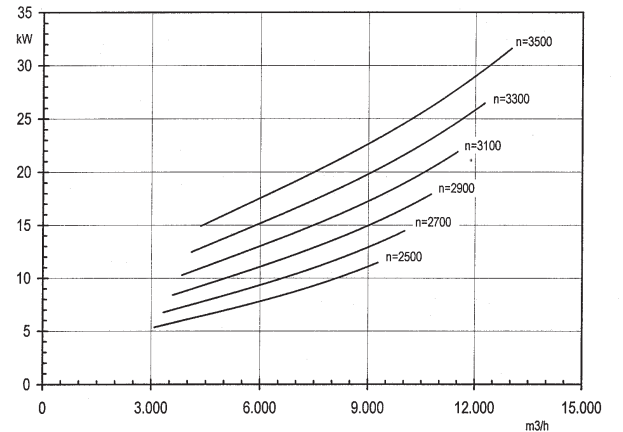
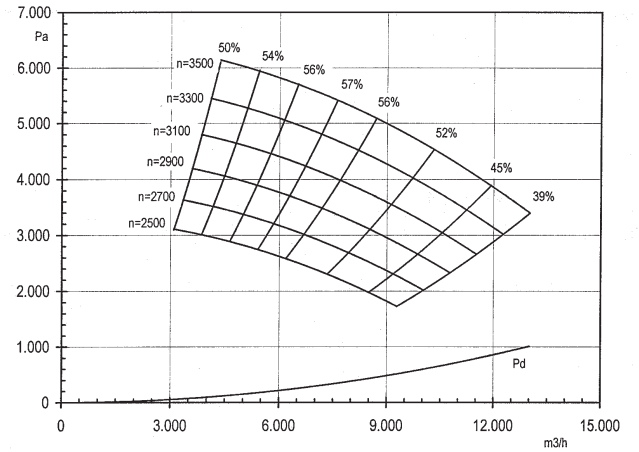
Typ	∅ Obež. kolesa	A	B	C	∅ D	D ₁	E	F	F ₁	G	G ₁	H	H ₁	J	J ₁	Hmotnosť kg *(R-S-T)
0.56-560	891	500	560	40	560	600	50	851	614	710	570	1465	1280	1046	1719,5	581-561-534
0.56-630	1000	560	630	40	630	670	50	950	690	794	641	1640	1435	1046	1740	641-628-643

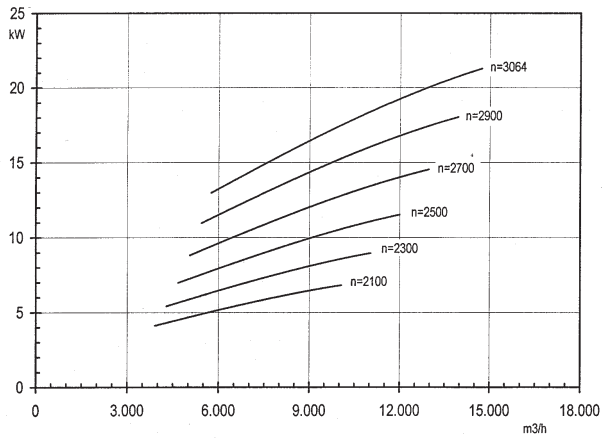
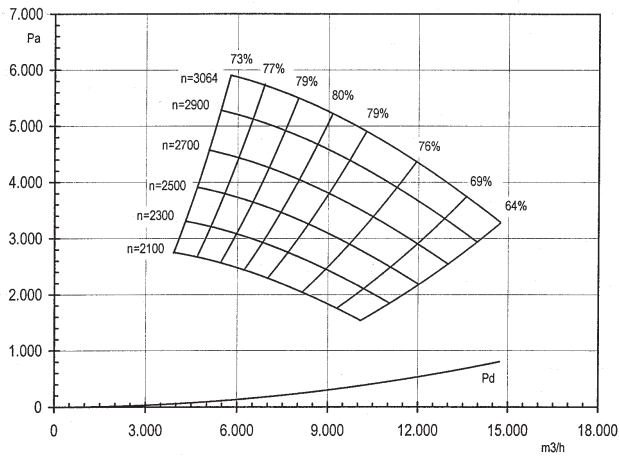
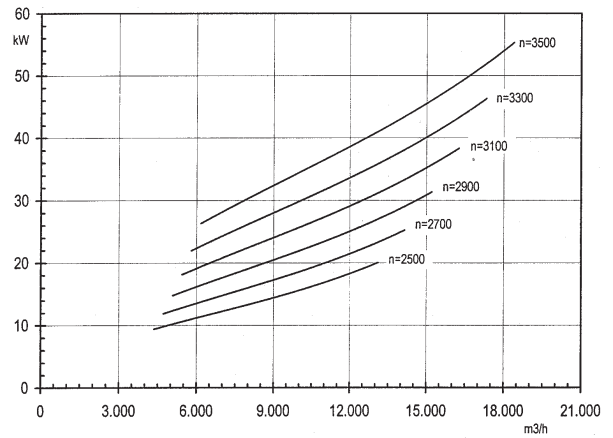
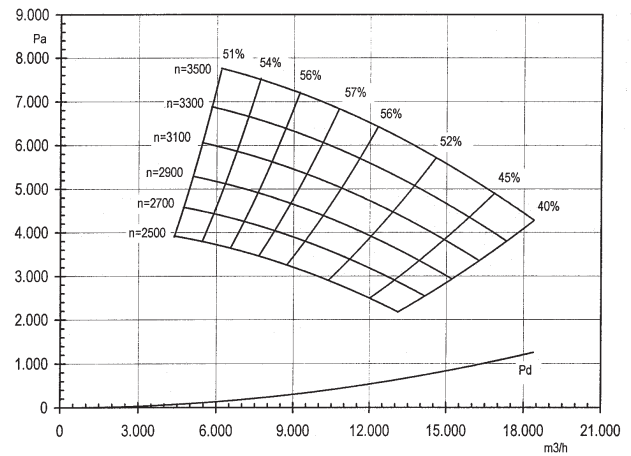
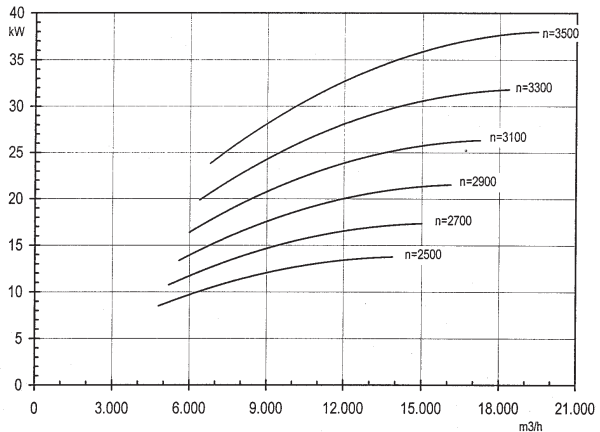
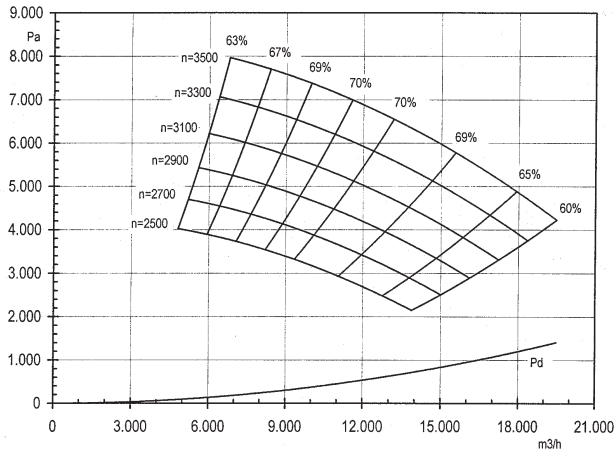
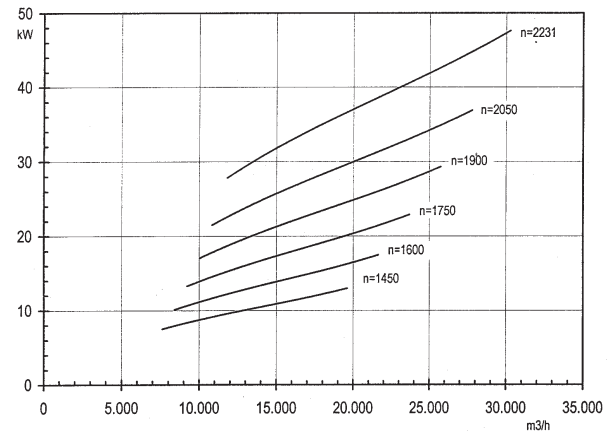
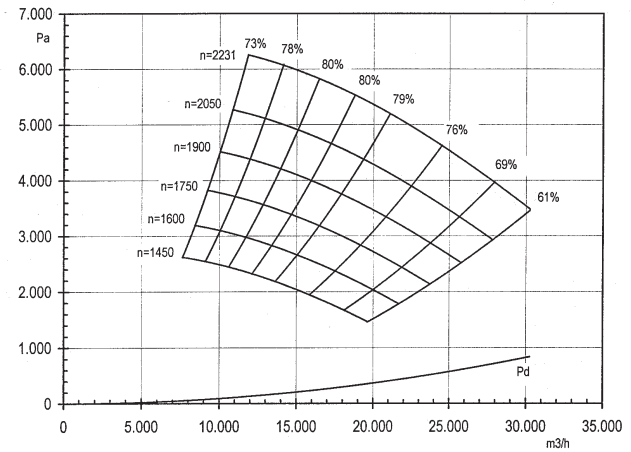
Typ	K (R-S-T)	L	M	N	u ₁	R ₁	n	R	Q ₁	p	Q	S	T	v	u
0.56-560	83,5-100-31	735	544	18	12	108,5	3	109	101	4	100,5	544	604	10	22
0.56-630	94-113-36	735	604	18	16	101	4	100,5	112	4	112,5	604	674	10	24

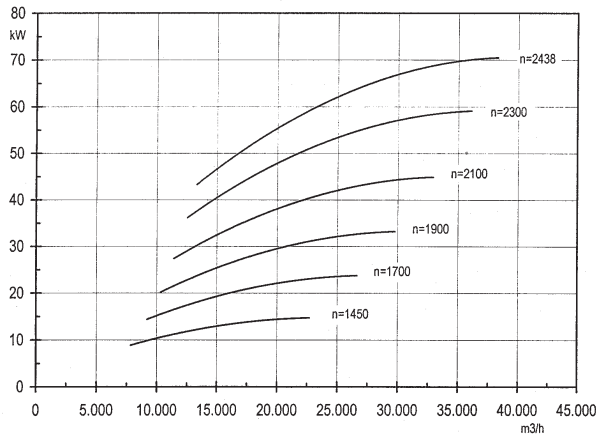
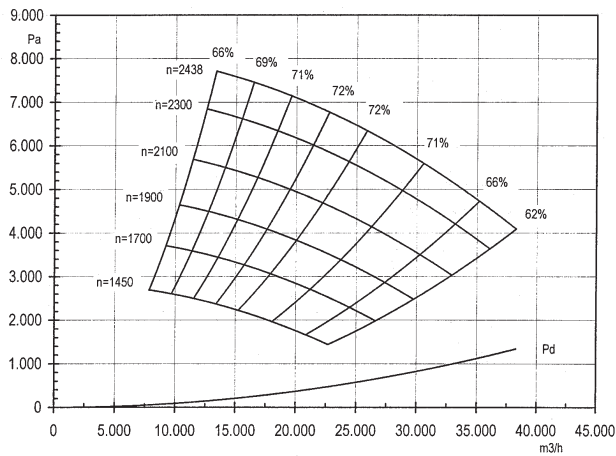
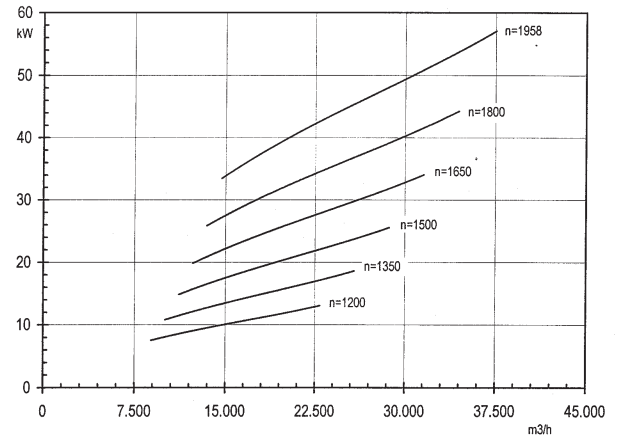
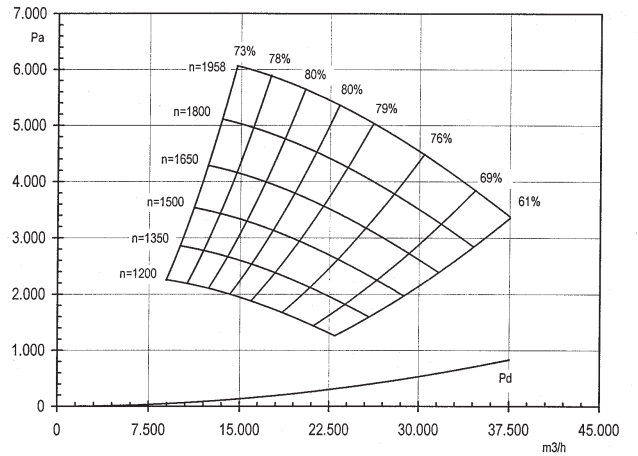
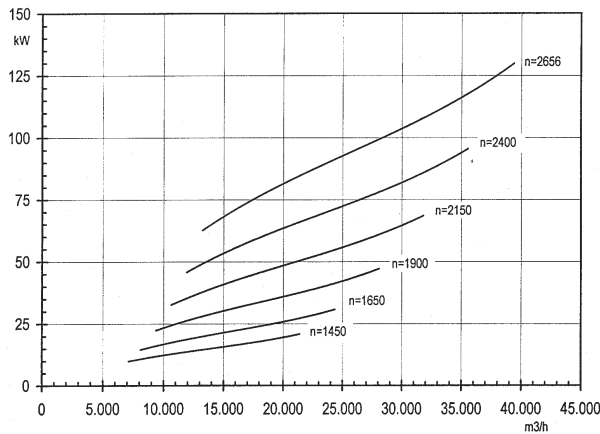
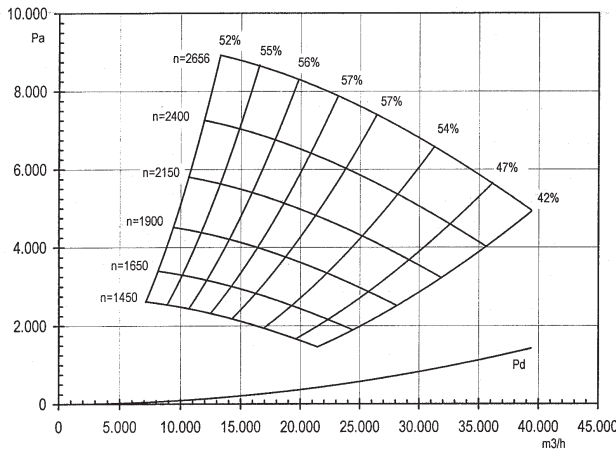
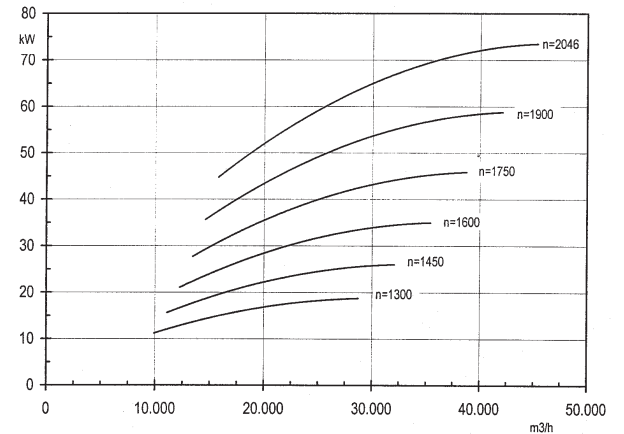
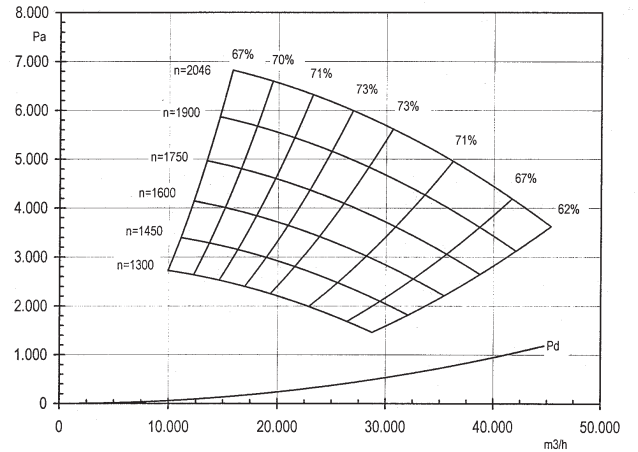
*Hmotnosť bez štandard.motora. Všetky rozmery v mm

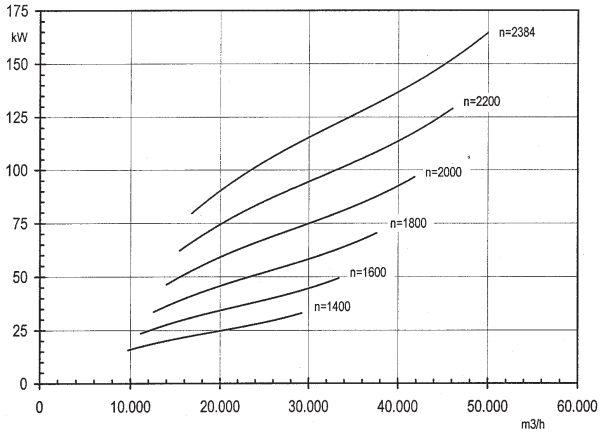
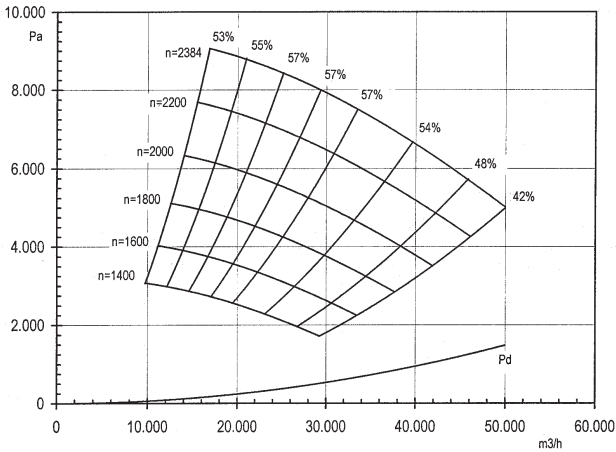
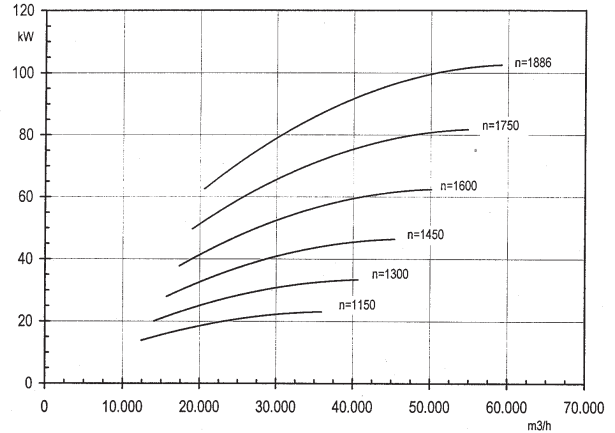
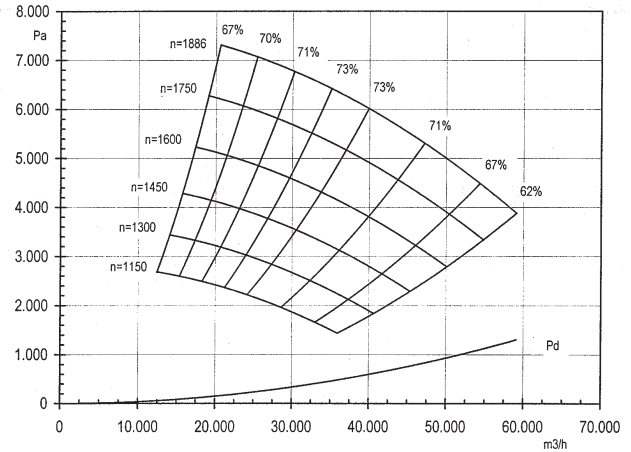
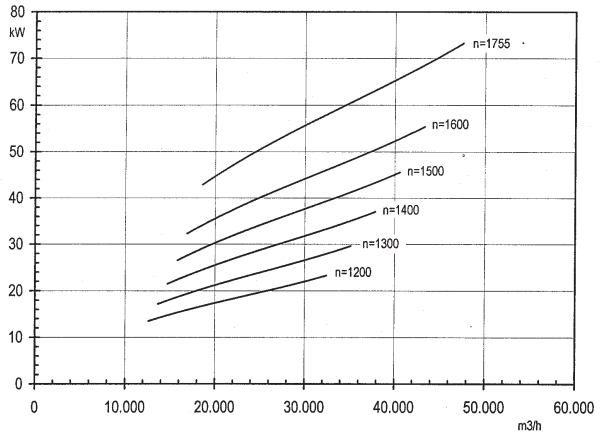
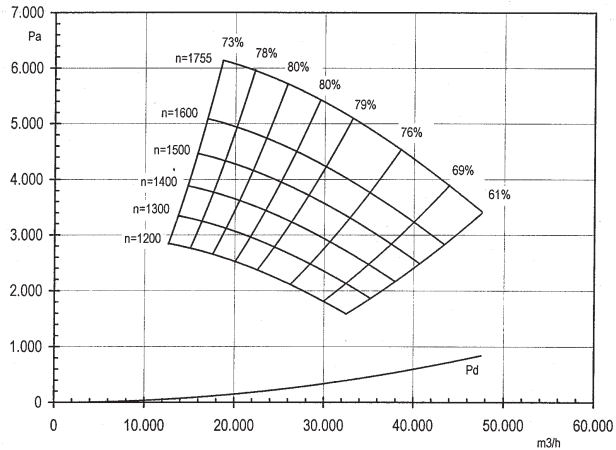
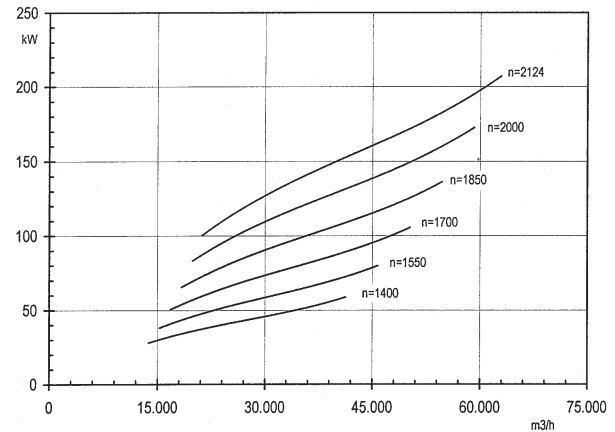
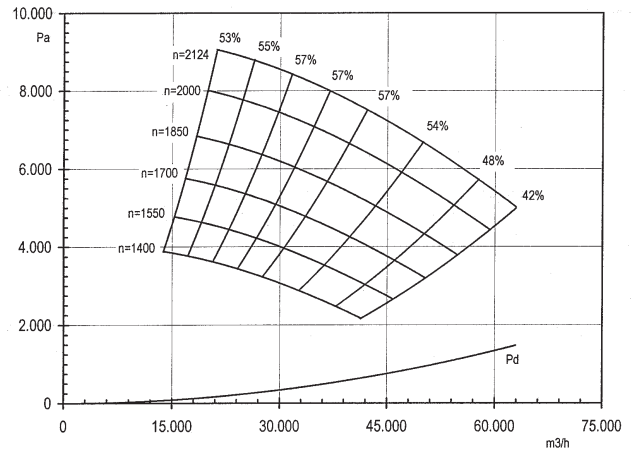
COMBIFAB R-0.56-224

COMBIFAB T-0.56-224

COMBIFAB S-0.56-224

COMBIFAB R-0.56-250


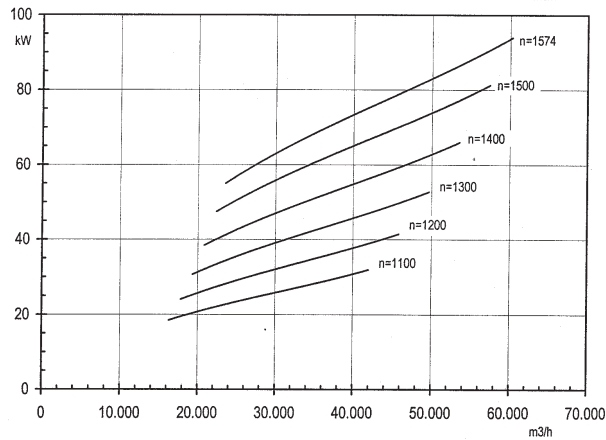
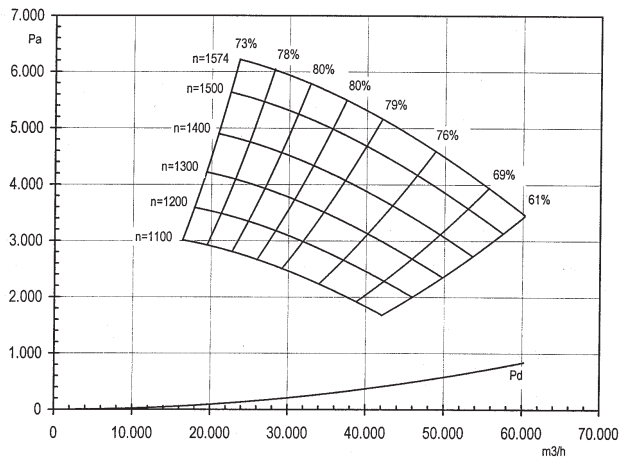
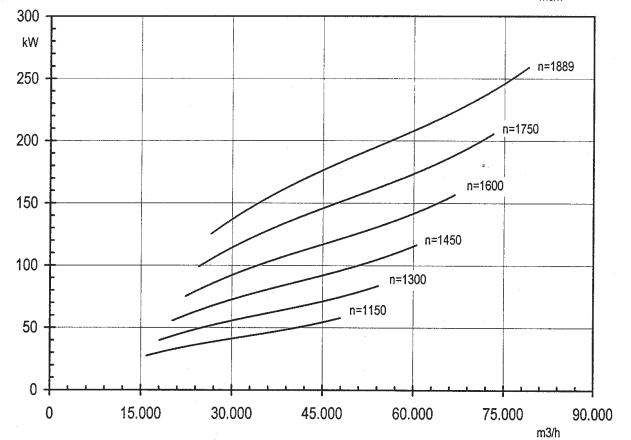
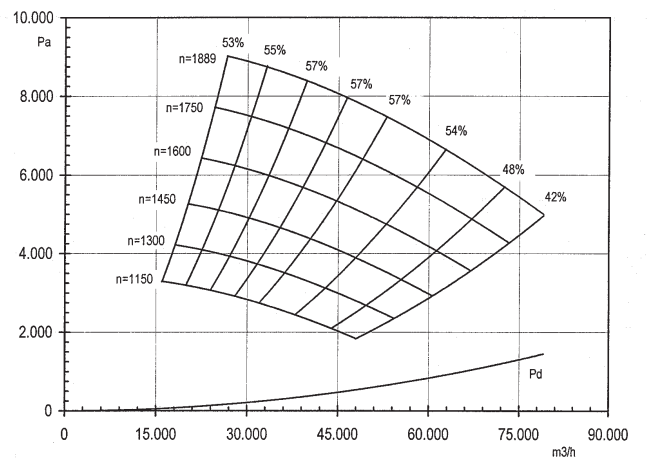
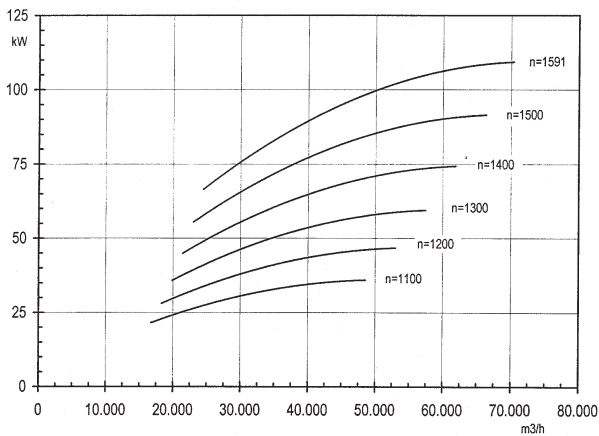
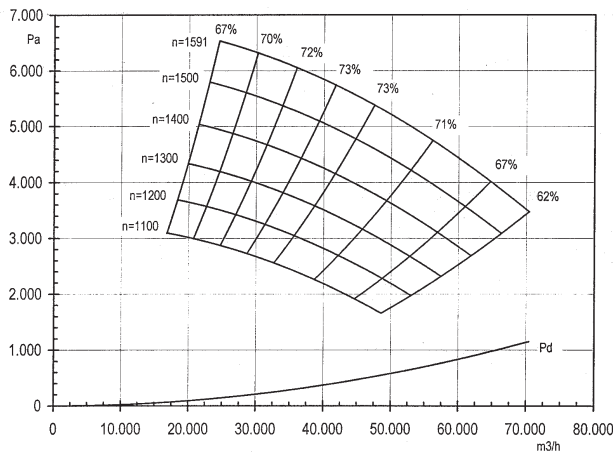
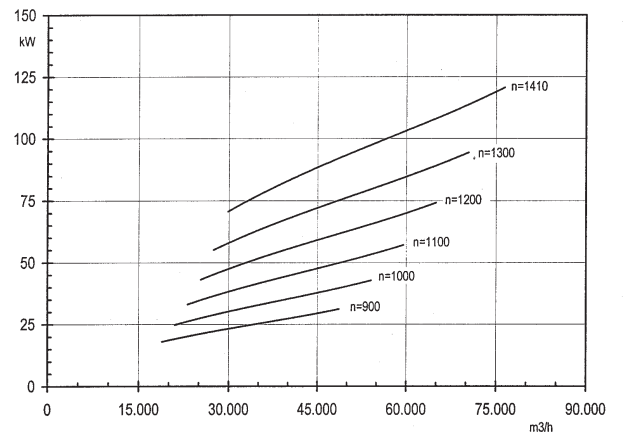
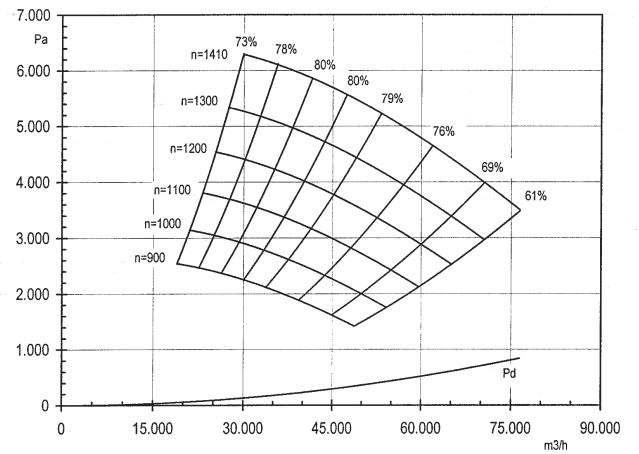
COMBIFAB S-0.56-250

COMBIFAB R-0.56-280

COMBIFAB T-0.56-250

COMBIFAB S-0.56-280


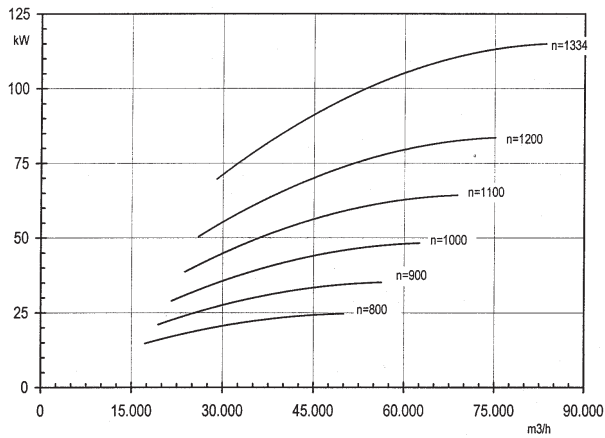
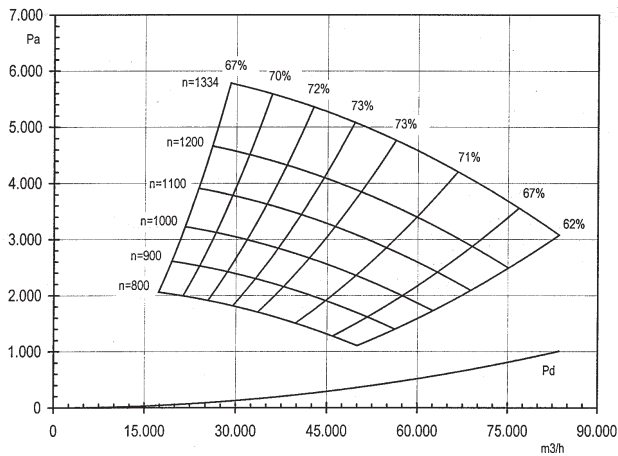
COMBIFAB T-0.56-280

COMBIFAB S-0.56-315

COMBIFAB R-0.56-315

COMBIFAB T-0.56-315


COMBIFAB R-0.56-355

COMBIFAB T-0.56-355

COMBIFAB S-0.56-355

COMBIFAB R-0.56-500


COMBIFAB S-0.56-500

COMBIFAB R-0.56-560

COMBIFAB T-0.56-500

COMBIFAB S-0.56-560


COMBIFAB T-0.56-560

COMBIFAB S-0.56-630

COMBIFAB R-0.56-630

COMBIFAB T-0.56-630


COMBIFAB R-0.56-710

COMBIFAB T-0.56-710

COMBIFAB S-0.56-710

COMBIFAB R-0.56-800


COMBIFAB S-0.56-800

COMBIFAB T-0.56-800
